

BYB@Blackrod



SAFEGUARDING AND CHILD PROTECTION

POLICY AND PROCEDURES

Approved and adopted by: BYB@Blackrod Trustees

Date: September 2024

Last reviewed: September 2024

Next review due by: September 2025

HEADTEACHER/PRINCIPAL:	Mrs Katherine Mead
DESIGNATED SAFEGUARDING LEAD (DSL):	Mrs Victoria Wilson
DEPUTY DESIGNATED SAFEGUARDING LEAD (DDSL):	Mrs Katherine Mead Mrs Rachael Littlefair
ALL STARS DSL	Ms Judith Parker
ALL STARS DDSL	Mr Max Hardcastle
DESIGNATED TEACHER FOR CLA:	Mrs Victoria Wilson
PREVENT LEAD:	Mrs Victoria Wilson
MENTAL HEALTH LEAD:	Mrs Victoria Wilson
CHAIR OF GOVERNORS:	Mr Martin Banks
SAFEGUARDING GOVERNOR:	Mr Martin Banks/Mrs Margaret Riley

Author: Bolton Safeguarding Education Team

Version: 4

Date: September 2024

Review Date: September 2025

CONTENTS

Updates from Child Protection and Safeguarding Policy 2023	4
Principles for Child Protection and Safeguarding Children	5
Scope	5
Key definition and concepts	6
Equality & Diversity	6
Safeguarding and promoting welfare	6
Our Role: Responding to a disclosure	7
Record keeping	8
Prevention	9
Early Help	9
Types of Abuse and Neglect	10
Neglect	11
Indicators of Abuse	12
Guidance for specific safeguarding circumstances	12
Domestic Abuse	13
Operation Encompass	13
Consent issues	13
Relationships and sex education	13
Child on child	14
Sexually Harmful Behaviour, violence and harassment	14
Online Safety - Including sharing of nude and semi-nude images	16
Harm outside the Home	17
Child Criminal exploitation/county lines	17
Child sexual exploitation	18
Serious Violent crime	18
Hazing/Initiation	19
Community Safety and liaising with the police	19
Honour based Abuse	19
FGM	19
Radicalisation, Extremism and Prevent Duty	20
Children with Family Members in Prison	21

Homelessness	21
Mental Health	22
Attendance and Children who are missing from Education	23
Late/Non collection of a child	23
Looked After Children: The Designated Teacher, Virtual Head	23
Private Fostering	24
Special Education Needs and Disability	24
The Voice of the child and Daily Lived Experience	25
Whistleblowing	25
Resolving Differences and Escalation Process	25
Managing Allegations against those who work with children and young people	25
Safer Recruitment	26
Arrangements for individuals coming on to our premises	26
Useful Telephone Contact Numbers	27
Appendix 1 – Summary of the Child Protection and Safeguarding Children Policy and Procedures for Teaching, Non-Teaching, Contractors, and Volunteers	28
Appendix 2 – Summary Child Protection & Safeguarding Children Policy for Parents and Carers	30
Appendix 3 – Role of Designated Safeguarding Lead	32
Appendix 4 – Guidance for safeguarding records	35
Appendix 5 – Body map guidance	36
Appendix 6 – Home injury form	37
Appendix 7 – Transfer of safeguarding records	39
Appendix 8 – Managing allegations against those who work with children flowchart (First Steps)	40
Appendix 9 – Managing professional allegations tracking form	41
Appendix 10 – The role of the Designated Teacher for CLA	44
Appendix 11 – Quick guide to making a referral	45
Appendix 12 – Encompass flowchart	46

Appendix 13 – Sexually harmful behaviour, violence and harassment flowchart	47
Appendix 14 – FGM flowchart	48
Appendix 15 – Statement of Trustees, staff & volunteers Commitment to the Safeguarding & Child Protection Policy	49

Updates and amendments made from the Safeguarding and Child Protection Policy 2023-24

Section	Summary of change
All	Keeping Children Safe in Education has been updated throughout to 2024.
All	Links to any GM procedures has been updated
All	When referring to abuse and neglect, exploitation has also been added.
Scope	Working together to Safeguard children updated to 2023. Description of WTSC amended. Independent schools standards year updated and link added.
Types of Abuse	Definition update to include more detail. Where children See, hear or experience its effects.
Safeguarding and promoting welfare	Definition updated to reflect WTSC 2023 - definition of Safeguarding – now includes online and harm outside the home and mental health now included within health and development
Early Help	Section updated. Updated with key wording from Working together to Safeguard children (WTSC) 2023 and Keeping Children Safe in Education 2024. Updated reasons Early Help will be considered to reflect WTSC 2023 Updated that Bolton ISA will be notified when there are changes to the Lead Professional. Updated to reflect that the EHA will be a 'whole family' approach
Operation Encompass	Sentence reworded "where there are children related to either of the adult parties involved."
Sexually harmful behaviour and Harassment	General rewording. Removed NSPCC and replaced with Farrer and co guidance for schools.
Online safety	Teaching online safety in schools updated to 2023 Add personalised info regarding use of mobile phone and smart technology
Sharing of nudes and semi nudes	Removed reference to stand alone policy. Now to use DFE guidance. Added link to 'So You Got Naked Online' resource.

Contextual Safeguarding	Section changed to new language 'Harm outside the home'.
Radicalisation and Prevent Duty	Extremism added to the title of this section Prevent Guidance updated to 2023 Links updated Trustees, staff and volunteers training added Counter terrorism policing link added Updated extremist ideas Link added to Managing risk of radicalisation in education settings
Attendance and children missing education	Updated to reflect School Attendance (Pupil Registration) (England) Regulations 2024
Children Missing from school site	New section added that links in the Missing from School Guidance
Mental Health	Added that parents may be advised to seek medical attention.
Behaviour and Safeguarding	The 'challenging behaviour' sentence has been changed. Changed behaviour guidance to 2024. Sentence added - Where a child and young person is placed in an alternative provision, we continue to be responsible for the safeguarding of that child and young person and will take steps to ensure we are satisfied that the placement meets their needs.
Managing allegation against those that work with children and young people	Sentence added - We utilise information on managing allegations from Bolton Council here and The Safer Recruitment Consortium Guidance for Safer Working Practice .
Arrangements for coming on to our premises	Sentence added from KCSIE -An assessment of the education value, the age appropriateness of what is going to be delivered and whether relevant checks will take place.
Special Educational needs and Disabilities	Bullet point added- The SENCO will be liaised with when there are any reports of abuse for children with SEND.
Contact numbers	Natalie France name changed to Mckeon. Child Protection unit number removed to ensure this isn't shared publicly.
Exploitation	General re wording. Police Intel form updated
Appendix 2 parents' version of the policy	Additional clarification on information and consent.
Appendix 3- Role of DSL	In relation to holding and sharing information. ICO guidelines added. Added rationale for decision making

Appendix 4 Guidance for safeguarding records	Additional bullet point added- rational for decision making
Appendix 5	Added to action taken- rational for decision making
Appendix 12 trustees, staff and volunteers allegations record form	Amended title in Contents from 'LADO form' to - Managing professional allegations tracking form. Added the definitions of outcomes

Principles for Child Protection and Safeguarding Children

PURPOSE AND PRINCIPLES

At BYB@Blackrod we strive to ensure that all children and young people remain safe and free from harm, and we are committed to playing a full and active part in the multi-Agency response to Child Protection concerns. We recognise that we are an important part of the wider safeguarding system for children and young people. The purpose of this document is to ensure that all our trustees, staff and volunteers are aware of the arrangements that we have in place for safeguarding and promoting the welfare and safety of our children and young people. It provides guidance to help trustees, staff and volunteers who may have concerns about the safety or welfare of a child or young person and sets out our position in relation to all aspects of the Safeguarding and Child Protection process.

SCOPE

This Policy reflects current statutory guidance:

[Education Act 2002](#): Section 175 of the Education Act 2002 requires local education authorities and the governors of maintained schools and further education (FE) colleges to make arrangements to ensure that their functions are carried out with a view to safeguarding and promoting the welfare of children. Section 157 of the same act and the Education ([Independent School Standards](#)) (England) Regulations 2019 require proprietors of independent schools (including academies and city technology colleges) to have arrangements to safeguard and promote the welfare of children who are children and young people at the school.

[Working Together to Safeguard Children 2023](#) This guidance applies to all organisations and agencies who have functions relating to children.

[Keeping Children Safe in Education 2024](#): Statutory guidance for schools and colleges was issued under Section 175 of the Education Act 2002, the Education (Independent School Standards) Regulations 2014 and the Education (Non-Maintained Special Schools) (England) Regulations 2011. This contains information on what schools and colleges **should** do and sets out the legal duties with which they **must** comply.

This policy and its procedures do not form part of the contract of employment; however, they apply to all full and part time employees, including those employed on temporary or fixed-term contracts. Volunteers, supply trustees, staff and volunteers and contractors who offer their services.

A shortened version is available for trustees, staff and volunteers (see appendix 1) and parents/carers (see appendix 2). All trustees, staff and volunteers are asked to sign to say they have read and understood the policy (see appendix 18).

The Integrated Front Door refers to Bolton's Children Social Care and Early Help Team.

This Policy is publicly available on the BYB pages on the Blackrod Primary School website and will be reviewed annually. It will be amended as required; this may be before the annual review date.

KEY DEFINITIONS AND CONCEPTS

The Children Act 1989 and 2004, states a child is anyone who has not reached their 18th birthday. The commitment to safeguarding and promoting the welfare of children however will extend to all children and young people who visit BYB@Blackrod.

EQUALITY AND DIVERSITY

We understand that promoting equality and diversity and tackling discrimination is essential in safeguarding our children and young people. We hold separate policies and procedures in place to address issues such as code of conduct that covers harassment and discrimination. We are committed to the Protected Characteristics under the Equality Act 2010:

- We will not unlawfully discriminate against children and young people with protected characteristics.
- We will consider how to support children and young people with protected characteristics.
- We will take positive action, where proportionate, to deal with the disadvantages these children and young people face.

The Equality Act 2010 can be accessed [here](#).

SAFEGUARDING AND PROMOTING WELFARE

No single professional can have a full picture of a child or young person's needs and circumstances. If children, young people and families are to receive the right help at the right time, **everyone** who comes into contact with them has a role to play in identifying concerns, sharing information and taking prompt action. To fulfil this responsibility effectively, all trustees, staff and volunteers will make sure their approach is child centred. This means that they will always consider what is in the **best interests** of the child. We recognise that children and young people at alternative provision and those missing education are potentially at greater risk of harm.

The Department for Education (DfE) 'Keeping Children Safe in Education' (September 2024), states safeguarding and promoting the welfare of children is defined for the purposes of this guidance as:

- providing help and support to meet the needs of children as soon as problems emerge
- protecting children from maltreatment, whether that is within or outside the home, including online
- preventing the impairment of children's mental and physical health or development
- ensuring that children grow up in circumstances consistent with the provision of safe and effective care
- taking action to enable all children to have the best outcomes.

We have relevant statutory policies in place for our charitable status that link to safeguarding and promoting the welfare of our children and young people including Health and Safety, Complaints, Code of Conduct. Details of these are contained in standalone policies and can be requested or accessed via our website.

Child Protection

The welfare of our children and young people is paramount. They have an absolute right to a childhood free from abuse, neglect, or exploitation.

Child Protection is part of safeguarding and promoting the welfare of children and refers to the activity that is undertaken to protect children who are suffering or are at risk of suffering significant harm.

Significant Harm

"Harm" is the "ill treatment or the impairment of the health or development of the child" (Section 31, [Children Act 1989](#); Harm can be determined "significant" by "comparing a child's health and development with what might be reasonably expected of a similar child".

Although there are no absolute criteria for determining whether harm is "significant", Bolton Local Authority social care, police, education and health agencies work with family members to assess the child, and a decision is made based on their professional judgement using gathered evidence.

OUR ROLE

- The Designated Safeguarding Lead (and deputies) have a number of responsibilities (See Appendix 3)

- All trustees, staff and volunteers have a responsibility to provide a safe environment in which children and young people can learn and develop in alignment to our constitution.
- Everyone who comes into contact with children, young people and their families have a role to play in safeguarding. Trustees, staff and volunteers are particularly important as they are in a position to identify concerns early and provide help for children and young people to prevent concerns from escalating.
- All members of trustees, staff and volunteers have a responsibility to be mindful of issues related to children and young people's safety and welfare and a **duty to report and refer** any concerns however "minor" they appear to be. (NB It is NOT, however the role of our trustees, staff and volunteers to investigate those concerns).
- We work in partnership with parents and parents have a right to be informed in respect of any concerns about their child's welfare, or any action taken to safeguard and promote the child's welfare, providing this does not compromise the child's safety.
- Children are best protected when professionals work effectively together and share responsibility for protective action.
- Where there are possible concerns about a child's safety, unconditional confidentiality cannot be guaranteed and should not be offered. When a child is subject to Child Protection Plan, information about the child and their circumstances will only be shared on a "need to know" basis.
- To have in place robust systems that deter possible abusers and will effectively manage any allegations or concerns about abuse if they arise. The trustees, staff and volunteers who have a concern about a child's welfare should follow the referral processes set below.
- To support social workers and other agencies following any referral.
- When children make allegations about abuse or neglect, they will always be listened to, have their comments taken seriously and, where appropriate, the allegations will be investigated thoroughly by a social worker and the police.
- All trustees, staff and volunteers are prepared to identify children who may benefit from early help. Trustees, staff and volunteers may be required to support other agencies and professionals in early help processes.
- [The Teachers' Standards 2011](#) state that teachers, including Headteachers, should safeguard children's wellbeing and maintain public trust in the teaching profession as part of their professional duties.

Record keeping

Records are kept updated and stored securely. Records are only accessed by those who need to and when file content is shared, this is done in line with Information Sharing [Guidance](#).

All concerns, discussions and decisions made, and the reasons for those decisions, are recorded in writing or using the appropriate form (see appendices 5) or electronic data base. If in doubt about recording requirements, trustees, staff and volunteers should discuss with the Designated Safeguarding Lead (or deputy) and read guidance in appendix 4.

The Designated Safeguarding Lead has oversight of record keeping and is responsible for keeping clear chronologies (see appendix 9) picking up any patterns and themes.

The Designated Safeguarding Lead is responsible for transferring Child Protection files to the new school or college within five days of an in-year transfer or within the first five days of term. They are transferred separately from the main file and a receipt should be obtained. The 'Transferring of Safeguarding Information form' (appendix 10) can be used as a check list and as receipt.

Child Protection records will be retained by the child's last setting until they reach their 25th birthday.

What trustees, staff and volunteers need to know:

All trustees, staff and volunteers are aware of our systems that support safeguarding, and these are explained to them as part of trustees, staff and volunteers induction. They are provided with this policy along with the following:

- Part one of Keeping Children Safe in Education (2023) or a condensed part one where we think it is more appropriate for our trustees, staff and volunteers not working directly with children.
- The trustees, staff and volunteers behaviour policy (sometimes called a code of conduct)
- The identity of the Designated Safeguarding Lead and deputies.

All our trustees, staff and volunteers receive appropriate safeguarding and child protection training at induction along with online safety training and information including an understanding of the expectations, applicable roles and responsibilities in relation to filtering and monitoring. This is regularly updated. In addition, all trustees, staff and volunteers receive safeguarding and child protection updates (for example, via email, newsletters, and trustees, staff and volunteers meetings), as required, but at least annually, to provide them with relevant skills and knowledge to safeguard children effectively.

All our trustees, staff and volunteers are aware of the early help process and understand their role in it. This includes identifying emerging concerns, liaising with the Designated Safeguarding Lead,

sharing information with other professionals to support early identification and assessment and, in some cases acting as the lead professional.

All our trustees, staff and volunteers are aware of the process for making referrals to children's social care (see flowchart- appendix 14).

All our trustees, staff and volunteers know what to do if a child tells them he/she is being abused or neglected. Trustees, staff and volunteers know how to manage the requirement to maintain an appropriate level of confidentiality whilst at the same time liaising with relevant professionals such as the Designated Safeguarding Lead and children's social care. Trustees, staff and volunteers will not promise that they will not tell anyone about an allegation, as this may ultimately not be in the best interests of the child.

All our trustees, staff and volunteers are advised to maintain an attitude of '**it could happen here**'. When concerned about the welfare of a child, trustees, staff and volunteers members will always act in the best interests of the child.

If a child or young person is in **immediate danger or is at risk of harm** either during working hours, outside of these hours or during an out of school/college activity a referral will be made to The Integrated Front Door or the out of hours team immediately. To avoid any delay, anybody can make a referral, however our DSL should always be notified. If the situation does not appear to be improving the trustees, staff and volunteers member with concerns should press for re-consideration. Concerns should always lead to help for the child and young person.

Responding to a disclosure

It is recognised that a child and young person may seek out an individual teacher/adult to share information specifically about abuse or neglect, or they may talk spontaneously, individually or in a group when trustees, staff and volunteers or volunteers are present.

In these situations, our trustees, staff and volunteers are required to:

- Provide a safe space for all children and young people including LGBTQ+ to enable them to speak out or share concerns with a member of trustees, staff and volunteers.
- Listen to the child and young person and allow them to freely recall significant events without asking leading questions.
- Reassure the child and young person but tell them that a record of the information given will be made. Record the information, include date, time and others present. Record the child and young person's demeanour as well as what is said.
- Explain that confidentiality cannot be promised if the matter is related to child protection.

- Explain that help may be required to keep them safe, but do not ask the child and young person to repeat their account of events to anyone else until further advice is sought.
- Recognise it may only be the first incident reported, rather than representative of a singular incident and that trauma can impact memory, so they may not be able to recall all details or timeline of abuse.
- Keep in mind that certain children and young people may face additional barriers to telling someone because of their disability, gender, ethnicity and/or sexual orientation.
- Reflect back, using the child's language, when hearing a report.

The individual who receives the information will be expected to pass it on as a matter of urgency to the Designated Safeguarding Lead (see Appendix 4) to record the information.

We recognise that children and young people may not feel ready or know how to tell someone they are being abused, neglected, or exploited and/or may not recognise that their experiences are harmful. This will not prevent our trustees, staff and volunteers from having professional curiosity and speaking to the DSL if they have concerns about a child. Trustees, staff and volunteers will determine how best to build trusted relationships with children and young people to facilitate effective communication.

Procedures and Guidelines for Child Protection and Safeguarding Children

PREVENTION

We take seriously our duty of care, and we are proactive in seeking to prevent our children and young people becoming the victims of abuse, neglect, or exploitation. We do this in several ways:

- Through the creation of an open culture which respects all individuals' rights and tackles bullying and discrimination of all kinds.
- By identifying trustees, staff and volunteers who have overall responsibility for safeguarding and child protection matters.
- By ensuring our Designated Safeguarding Lead receives training and acts as a source of advice and support to other trustees, staff and volunteers.
- By informing children and young people of their rights to be free from harm and encouraging them to talk to trustees, staff and volunteers if they have any concerns.

EARLY HELP

Early Help means providing help and support to meet the needs of children as soon as problems emerge.

In Bolton we refer to Bolton's [Framework for action](#) which provides guidance on how Early Help will facilitate high quality, collaborative working that is holistic and supportive. Early Help support is

available to children of all ages to improve a family's resilience and outcomes or reduces the chance of a problem getting worse.

For Early Help to be effective, we work closely with families and partner agencies to:

- Identify children, young people and families who would benefit from support.
- Undertake an assessment of need that considers the whole family.
- Provide services to address those needs.
- Review progress to ensure that positive change has happened.

Factors which may indicate a child and young person may benefit from Early Help (not exhaustive)		
Misusing drugs or alcohol	Young carers	Frequently missing
Family circumstances such as parental drug, alcohol, mental health and domestic abuse	Is viewing problematic and/or inappropriate online content or developing inappropriate relationships online.	Anti-social behaviour, criminality, gangs/Organised Crime Group (OCG), County lines, including knife crime
Mental ill health	Missing education, persistently absent or not in receipt of full-time education	Returned to family from care or stepped down from social care involvement
At risk or being radicalised or exploited	Suspensions and at risk of, or has been permanently exclusion	At risk of modern slavery trafficking or exploitation
A family member in prison or parental offending	Medical conditions, disabled or special educational needs	Honour based abuse such as FGM or forced marriage
Bereavement		Is being privately fostered

We are committed to Early Help and the identification of unmet needs and vulnerabilities of our children and young people. Our trustees, staff and volunteers are aware of the Early Help process and understand their role in identifying emerging problems, sharing information with other agencies and for some trustees, staff and volunteers acting as the lead professional in undertaking Early Help Assessments and co-ordinating support. We support the wellbeing of children, young people, and families by tackling emerging needs at the earliest opportunity and prevent them from getting worse. We recognise that the needs of different family members impact on each other and we ensure that specific needs such as disabilities, those whose first language isn't English, fathers or male carers, and parents who identify as LGBTQ are considered.

Where Early Help is no longer effective, and concerns are escalating a consultation with the Early Help Access point will take place to determine if a referral to Targeted Early Help Services or statutory services is required.

Bolton's Integrated Front Door aligns Children's Social Care and Early Help. Contact details- 01204 331500 Option 1 Early Help access point, Option 2 Children's Social Care, Option 3 Professional Consultation Line.

The Early help Assessment and review form can be found [here](#)

To refer to the Targeted Early Help Team an online referral form can be found [here](#)

With consent all Early Help Assessments, reviews, closures or changes to the Lead Professional are sent to boltonisa@bolton.gov.uk

TYPES OF ABUSE AND NEGLECT

Abuse: *a form of maltreatment of a child. Anybody may abuse or neglect a child by inflicting harm, or by failing to act to prevent harm. Harm can include ill treatment that is not physical as well as the impact of witnessing ill treatment of others. This can be particularly relevant, for example, in relation to the impact on children of all forms of domestic abuse, including where they see, hear or experience its effects. Children may be abused in a family or in an institutional or community setting by those known to them or, more rarely, by others. Abuse can take place wholly online, or technology may be used to facilitate offline abuse. Children may be abused by an adult or adults or by another child or children. Types of abuse may overlap*

Physical abuse: *a form of abuse which may involve hitting, shaking, throwing, poisoning, burning or scalding, drowning, suffocating or otherwise causing physical harm to a child. Physical harm may also be caused when a parent or carer fabricates the symptoms of, or deliberately induces, illness in a child. More information on Fabricated or Induced Illness can be accessed [here](#).*

Emotional abuse: *the persistent emotional maltreatment of a child such as to cause severe and adverse effects on the child's emotional development. It may involve:*

- Conveying to a child that they are worthless or unloved, inadequate, or valued only insofar as they meet the needs of another person.
- Not giving the child opportunities to express their views, deliberately silencing them or 'making fun' of what they say or how they communicate.
- Feature age or developmentally inappropriate expectations being imposed on children. These may include interactions that are beyond a child's developmental capability as well as overprotection and limitation of exploration and learning or preventing the child participating in normal social interaction.
- It may involve seeing or hearing the ill-treatment of another, domestic abuse, bullying (including cyberbullying), causing children frequently to feel frightened or in danger, or the exploitation or corruption of children.

Sexual abuse: *involves forcing or enticing a child or young person to take part in sexual activities, not necessarily involving a high level of violence, whether or not the child is aware of what is happening.*

- The activity may involve physical contact, including assault by penetration (for example rape or oral sex) or non-penetrative acts such as masturbation, kissing, rubbing and touching outside of clothing.
- They may also include non-contact activities, such as involving children in looking at, or in the production of, sexual images, watching sexual activities, encouraging children to behave in sexually inappropriate ways, or grooming a child in preparation for abuse (including via the internet).
- Sexual abuse is not solely perpetrated by adult males. Women can also commit acts of sexual abuse, as can other children.

We are aware of and promote the [Stop abuse together \(campaign.gov.uk\)](https://www.campaign.gov.uk)

Neglect: *neglect is the persistent failure to meet a child's basic physical and/or psychological needs, likely to result in the serious impairment of the child's health or development.* Neglect may involve a parent or carer failing to:

- Protect a child from physical and emotional harm or danger.
- Provide adequate food, clothing and shelter including exclusion from home.
- Ensure adequate supervision (including the use of inadequate caregivers or children being left unattended or abandoned at home).
- Ensure access to appropriate medical care, treatment, and/or education.
- It may also include neglect of, or unresponsiveness to, a child's basic physical and emotional needs.

We refer to Boltons [Neglect Practice Guidance](#)

INDICATORS OF ABUSE AND NEGELCT

Our trustees, staff and volunteers will look out for any of the following indicators and take the appropriate action. The child and young person may:

- Show unexplained or suspicious injuries such as bruising, cuts or burns, particularly if situated on a part of the body not normally prone to such injuries.
- Have an injury for which the explanation seems inconsistent.
- Describe what appears to be an abusive act in which they were involved – verbally or in written form such as an essay or drawing.
- Show unexplained changes in behaviour - e.g., becoming very quiet, withdrawn, or displaying sudden outburst of temper or hysteria. Academic work may suddenly deteriorate.

- Demonstrate age-inappropriate sexual awareness.
- Engage in sexually explicit behaviour.
- Be distrustful of adults.
- Have difficulty in making friends or be prevented from socialising with other children.
- Showing signs of depression, self-injury, suicidal tendencies.
- Not being taken to medical appointments.
- Lose weight for no apparent reason.
- Become increasingly dirty or unkempt, with inadequate or damaged clothing.

The above list is not exhaustive and the presence of one or more of the indicators will not be proof that abuse is taking place. It is **not** the responsibility of members of trustees, staff and volunteers to decide that abuse is occurring, but it is their responsibility to act on any concerns.

GUIDANCE FOR SPECIFIC SAFEGUARDING CIRCUMSTANCES

All trustees, staff and volunteers have an awareness of specific safeguarding areas. Expert and professional organisations are best placed to provide up-to-date guidance and practical support on specific safeguarding issues. For example, NSPCC offers information for schools and colleges on the TES [website](#) and also on its own website www.nspcc.org.uk.

We access broad government guidance on a range of safeguarding issues via the GOV.UK [website](#), Bolton Safeguarding Partnership [website](#) and Greater Manchester [Procedures](#).

DOMESTIC ABUSE

Domestic violence and abuse is: Any incident or pattern of incidents of controlling, coercive, threatening behaviour, violence or abuse between those aged 16 or over who are or have intimate partners or family members regardless of gender or sexuality. The abuse can include, but is not limited to:

*Psychological *Physical *Sexual *Financial *Emotional

Exposure to domestic abuse and/or violence can have a serious, long lasting emotional and psychological impact on children and young people through seeing, hearing, or experiencing the effects of it within in their home life and/or in their own intimate relationships.

The Domestic Abuse Act came into force in 2021 and support can be found [here](#). Bolton's Domestic Abuse Handbook will be referred to and can be accessed [here](#)

If we are concerned about domestic abuse, we will take action. This could be contacting support services such as [Endeavour](#), [Fortalice](#), the Police or the Integrated Front Door. An Early Help assessment will be considered in cases with no social care involvement.

OPERATION ENCOMPASS

Encompass is a partnership between the Police, Local Authority and Education. Working together to safeguard children, the Police will inform us after a domestic abuse incident where there are children related to either of the adult parties involved. This enables us to take appropriate steps to safeguard and support children and young people during what could be a difficult day. In its simplest form, they are given some leeway, comfort, support and interventions where appropriate. If Social Care are not working with the family, Early Help will be considered to offer a holistic package of support to children and young people and their family.

We can gain free advice and support from the OE Teachers' National Helpline on 0204 513 9990. Resources are available through encompass on their [website](#). See flow chart appendix 15.

CONSENT

If a young person is under the age of 13 years old, under the Sexual Offences Act 2003 they cannot legally consent to any form of sexual activity. Therefore, a referral to The Integrated Front Door will be made in all such cases.

The [Sexual Offences Act 2003](#) reinforces that, whilst mutually agreed, non-exploitative sexual activity between teenagers does take place and that often no harm comes from it, the age of consent still remains at 16 years of age. This acknowledges that this group of young people are still vulnerable even when they do not view themselves as such. Whilst a referral to The Integrated Front Door or the police is not mandatory in such cases, careful consideration (including whether the children are Gillick Competent (using [Fraser competent Guidelines](#)) must be given and explore any difference of age, maturity, functioning and experiences and also an awareness of the potential consequences of their act. The Designated Safeguarding Lead may seek guidance from The Safeguarding in Education Team and or the Integrated Front Door in such cases.

RELATIONSHIP AND SEX EDUCATION

It is now compulsory to teach relationships education in primary schools, and relationships and sex education in secondary schools. This area of work will support our children and young people with a variety of issues that will reduce them being at risk of harm and promote them having better life chances. Our teachers are prepared to handle any safeguarding issues that may arise during these lessons and will report any concerns that are identified to the Designated Safeguarding Lead without delay.

CHILD ON CHILD ABUSE

Trustees, staff and volunteers are aware of the harm caused by bullying and will use our anti-bullying procedures where necessary. However, there will be occasions when a child and young

person's behaviour warrants a response under child protection rather than anti-bullying procedures.

Children can abuse other children. This is generally referred to as child-on-child abuse and can take many forms. This can include (but is not limited to):

- bullying (including cyberbullying).
- physical abuse such as hitting, kicking, shaking, biting, hair pulling, or otherwise causing physical harm.
- sexual violence such as rape, assault by penetration and sexual assault.
- sexual harassment, such as sexual comments, remarks, jokes and online sexual harassment, which may be stand-alone or part of a broader pattern of abuse.
- up skirting, which typically involves taking a picture under a person's clothing without them knowing, with the intention of viewing their genitals or buttocks to obtain sexual gratification, or cause the victim humiliation, distress, or harm.
- Sharing of Nudes and Semi Nudes (also known as youth produced imagery)

Child on Child abuse will never be accepted or dismissed as 'children being children.'

Should we identify child on child abuse and identify risk of significant harm, we will refer to the Integrated Front Door and the police to make sure that the children and young people affected get the help and protection they need. Should the case not require Social Care intervention Early Help will be offered.

SEXUALLY HARMFUL BEHAVIOUR, VIOLENCE AND HARASSMENT

*Sexual violence and harassment can occur between two children of **any** age and sex. It can also occur through a group of children sexually assaulting or sexually harassing a single child or group of children. Children and young people who are victims of sexual violence and harassment will likely find the experience stressful and distressing. This will, likely, adversely affect their educational attainment.*

Sexual violence and sexual harassment exist on a continuum and may overlap, they can occur online and offline (both physical and verbal). Some groups are potentially more at risk. Evidence shows girls, children with SEND and LGBTQ+ children are at greater risk.

What is Sexual violence and sexual harassment?

Sexual violence

When referring to sexual violence we are referring to sexual offences under the Sexual Offences Act 2003 as described below:

Rape: A person (A) commits an offence of rape if: he intentionally penetrates the vagina, anus, or mouth of another person (B) with his penis, B does not consent to the penetration and A does not reasonably believe that B consents.

Assault by Penetration: A person (A) commits an offence if: s/he intentionally penetrates the vagina or anus of another person (B) with a part of her/his body or anything else, the penetration is sexual, B does not consent to the penetration and A does not reasonably believe that B consents.

Sexual Assault: A person (A) commits an offence of sexual assault if: s/he intentionally touches another person (B), the touching is sexual, B does not consent to the touching and A does not reasonably believe that B consents.

Sexual harassment

When referring to sexual harassment we mean 'unwanted conduct of a sexual nature' that can occur online and offline. When we reference sexual harassment, we do so in the context of child-on-child sexual harassment. Sexual harassment is likely to: violate a child's dignity, and/or make them feel intimidated, degraded, or humiliated and/or create a hostile, offensive or sexualised environment.

Whilst not intended to be an exhaustive list, sexually harmful behaviour and harassment can include:

- unwanted sexual comments and messages, including social media, such as: telling sexual stories, making lewd comments, making sexual remarks about clothes and appearance, and calling someone sexualised names.
- sexual "jokes" or taunting.
- physical behaviour, such as: deliberately brushing against someone, interfering with someone's clothes (we consider if this crosses a line into sexual violence, we will talk to and consider the experience of the victim) and displaying pictures, photos or drawings of a sexual nature.
- online sexual harassment.
- abuse in intimate personal relationships between peers.
- non-consensual sharing of sexual images and videos.
- sexualised online bullying.
- sexual exploitation; coercion and threats

(Also see [consent](#) section)

Our culture

We have created a culture where sexual harassment and online sexual abuse are not tolerated.

We identify issues and intervene early to better protect our children and young people.

- We make clear that sexual violence and sexual harassment is not acceptable.
- We do not tolerate or dismiss sexual violence or sexual harassment as “banter”, “part of growing up”, “just having a laugh”.
- We challenge behaviours (potentially criminal in nature), such as grabbing bottoms, breasts and genitalia, flicking bras, sexist language and lifting up skirts.
- We do not rely on children and young people making disclosures, we actively look out for any indicators such as a change in behaviour or emotional wellbeing. We will openly ask outright if they have been harmed or threatened.
- We make clear to our children and young people the ways they can report and who they can go to. Children and young people can speak to Mrs Wilson (DSL) and Mrs Wilson hosts Pastoral Pop in where pupil have a safe space to speak to her. Other trusted adults such as class teacher are also signposted to the children.
- We are committed to preventing and responding to any sexually harmful behaviours at the earliest opportunity.
- We follow guidance within Keeping Children Safe in Education (2024, part 5), Greater Manchester Procedures [here](#) and Ferrier and Co guidance [here](#).
- We promote the [Dedicated helpline for victims of abuse in schools | NSPCC](#) and [Stop abuse together \(campaign.gov.uk\)](#)
- We are aware that being subject to harassment, violence and or abuse, may breach children's rights, as set out in the Human Rights.

We ensure our trustees, staff and volunteers receive training to ensure that they are able to:

- better understand the definitions of sexual harassment and sexual violence, including online sexual abuse.
- identify early signs of child-on-child sexual abuse.
- consistently uphold standards in their responses to sexual harassment and online sexual abuse.
- Engage children and young people in sensitive conversations.
- See our Behaviour and Relationships policy

How we respond to sexual violence or sexual harassment:

- Advise support and guidance may be sought from the Safeguarding Education Team, Social Care and the Police.
- For all cases where a child has been significantly harmed, Children's Social Care and the Police will be contacted.

- We put measures in place to safeguard children without delay for example the introduction of a safety and support plan ensuring victim and those accused are kept a reasonable distance apart on school premises including at before and after-school activities.
- We balance the victims wishes against our duty to protect them and other children and young people. If the referral is against the wishes of the victim, this will be handled extremely sensitively, and the reasons provided to the victim and support offered.
- If Social Care do not become involved, support will be offered through the Early Help process.
- We listen and reassure all victims that they are being taken seriously and that they will be supported and kept safe.
- We will never give the impression that the child and young person is creating a problem by reporting sexual violence or harassment. A victim will never be made to feel ashamed for making a report.
- We listen to the report but do not ask any leading questions nor speak to those accused until advice is sought.
- Our behaviour policy will be followed including applying sanctions when appropriate, to reinforce a culture where sexual abuse, violence, harassment and online sexual abuse are not tolerated.
- The accused child and young person will also be provided with support.
- We signpost victims to support such as Help after rape and sexual assault - NHS (www.nhs.uk) where appropriate.
- We put measures in place to support all children and young people involved with their emotional wellbeing.
- All incidents will be recorded to ensure our DSL has oversight to identify patterns and intervene early.

*See flow chart Appendix 16.

With reports of rape and assault by penetration, whilst the facts are being established alongside the Integrated Front Door and the police, those accused will be removed from any classes they share with the victim. We will also carefully consider how best to keep the victim and those accused a reasonable distance apart on our premises (including during any before or after school-based activities) and on transport to and from the school, where appropriate. These actions are in the best interests of all children involved and should not be perceived to be a judgement on the guilt of those accused. For other reports of sexual violence and sexual harassment, the proximity of the victim and those accused regarding shared classes, sharing school premises and school transport, will be considered immediately. We will gain details of any bail conditions and put measures in place to ensure these are adhered to.

Our online safety policy explains how we keep children and young people safe online. Cyber-bullying, via texts and emails, will be treated as seriously as any other type of bullying and will be managed through our anti-bullying and behaviour policies.

We recognise that whilst working online it is essential that children and young people are safeguarded from potentially harmful and inappropriate online material. We follow the [DFE Filtering and Monitoring Standards](#) and [Cyber Security Standards](#). As such, we have robust security in place such as appropriate filters and monitoring systems. This includes both our network and devices. Trustees, staff and volunteers are aware of these systems, can manage them effectively and will escalate any concerns immediately to the DSL. Our systems are reviewed annually. During any contact, interventions, and assessments we will always consider online risks to the child and young person. We ensure that children and young people are taught how to keep safe online, through teaching and learning opportunities, as part of providing a broad and balanced curriculum. Harmful and inappropriate content is blocked without unreasonably impacting teaching and learning. We involve parents and carers in this learning. We will communicate regularly with parents to reinforce the importance of children being safe online. Parents are informed of the systems we have in place to filter and monitor online use, what we are asking the children to do online, including sites they will be asked to access and who from school (if anyone) their child will be interacting with online. If children and young people are learning remotely we refer to government guidance [here](#).

Should we have any concerns we will:

- Refer to the Department of Education guidance on [Teaching on line safety in schools](#) (2023), [Greater Manchester Procedures](#) and [UK Council for child internet safety](#) (UKCCIS).
- Report to [CEOP](#) a law enforcement agency that keeps children and young people safe from sexual exploitation and abuse- [Reporting link](#) or Tel 0800 1111
- We access resources from [UK safer Internet](#) to keep children and young people safe online. We will also encourage our children and young people/parents/carers to anonymously report online child sexual abuse imagery and videos to the safer internet [Hotline](#).
- Report any harmful content to - www.reportharmfulcontent.com
- See our online safety policy.

Sharing of Nudes and Semi Nudes (also known as youth produced imagery)

Sharing of nudes and semi nudes refers specifically to sharing nude and semi-nude images and/or videos. Trustees, staff and volunteers will refer to the Government guidance in relation to [Sharing nude and semi nudes: advice for education settings 2024](#).

We also utilise resources through the SWGFL [So You Got Naked Online](#) and promote the [Report Remove tool](#) whereby children, young people and adults can report nude images of them that are circulating social media and ensure they are taken down.

See our online safety Policy

HARM OUTSIDE THE HOME

Harm outside the home refers to understanding, and responding to, young people's experiences of significant harm beyond their families. It recognises that the different relationships that young people form in their neighborhoods, schools and online can feature violence and abuse. Parents and carers have little influence over these contexts, and young people's experiences of extra-familial abuse can undermine parent-child relationships.

Child Criminal Exploitation /county lines

Child Criminal Exploitation (CCE) is a geographical widespread form of harm that is a typical feature of county lines criminal activity, drug networks or gangs groom and exploit children and young people to carry drugs and money from urban areas to suburban and rural areas, market, and seaside towns. Key to identifying potential involvement in county lines are missing episodes when the victim may have been trafficked for the transporting of drugs.

If we have any concerns regarding exploitation we will refer to guidance provided by the [Home Office](#) and Greater Manchester [procedures](#) along with [Multi agency practice principles for responding to exploitation and extra familial harm](#). We will record the concerns and if we believe the threshold is met for statutory intervention refer to The Integrated Front Door. Should Social Care intervention not be required Early Help will be offered.

The Designated Safeguarding Lead (and any deputies) is aware of the National Referral Mechanism and will consider if a notification is required through the Integrated Front Door. Like other forms of abuse and exploitation, CCE can:

- affect any child or young person (male or female) under the age of 18 years.
- affect any vulnerable adult over the age of 18 years.
- still be exploitation even if the activity appears consensual.
- involve force and/or enticement-based methods of compliance and is often accompanied by violence or threats of violence.
- be perpetrated by individuals or groups, males or females, and young people or adults; and
- is typified by some form of power imbalance in favour of those perpetrating the exploitation.

Child Sexual Exploitation (CSE):

The definition of Child Sexual Exploitation is as follows:

Child sexual exploitation is a form of child sexual abuse. It occurs where an individual or group takes advantage of an imbalance of power to coerce, manipulate or deceive a child or young person under the age of 18 into sexual activity (a) in exchange for something the victim needs or wants, and/or (b) for the financial advantage or increased status of the perpetrator or facilitator. The victim may have been sexually exploited even if the sexual activity appears consensual. Child sexual exploitation does not always involve physical contact; it can also occur through the use of technology.

Technology is widely used by perpetrators as a method of grooming and coercing victims, often through social networking sites. More information about Child Sexual Exploitation is available on the [Bolton Safeguarding Children Partnership website](#), [Greater Manchester Procedures](#) and trustees, staff and volunteers are also aware of the Department for Education's [Child sexual exploitation: guide for practitioners](#). Online training is also available at [Pace UK](#).

If there are concerns that a child and young person may be being sexually exploited, we will record the concerns and where appropriate refer to The Integrated Front Door. Should Social Care intervention not be required Early Help will be offered.

If we have concerns that a child and young person is being exploited, then a referral will be made to The Integrated Front Door. We will also complete the Police Partner Agency form to share any information we have in relation to child exploitation (criminal or sexual).



Partner Agency
Intelligence Form - 'D'

We will work in partnership with the Complex Safeguarding Team, If the child and young person becomes allocated to a Complex Safeguarding Support Worker or Social worker within the team.

We will share appropriate information as requested by CEAM via the Safeguarding Education Team.

Serious Violent Crime

Our trustees, staff and volunteers are aware of indicators, which may signal that children and young people are at risk from or involved in serious violent crime. They may include increased absence from school, a change in friendships or relationships with older individuals or groups, a significant change in wellbeing or signs of assault and unexplained injuries, attention deficit, involvement in drugs and alcohol, changes to income and poverty. Unexplained gifts or new

possessions could also indicate that children and young people have been approached by, or are involved with, individuals associated with criminal networks or gangs.

We will ensure that we carry out '**justified, proportionate and reasonable**' searches in our school where appropriate following the guidance on [Searching, Screening and Confiscation](#) available from the DFE. Guidance on gangs and youth violence can be found [here](#).

More information can be found in our Behaviour and Relationships policy.

We will work in partnership with the local Police, Social Care, Early Help and other key partners to identify timely intervention for our children and young people at risk of exploitation and violent crime. We will consult the [NPCC- When to call the police](#) and also share any intelligence with the police using the form above (see exploitation section).

Hazing/Initiation

Hazing or initiation ceremonies refers to the practice of rituals, challenges, and other activities involving harassment, abuse or humiliation used as a way of initiating a person into a group.

Hazing is seen in many different types of social groups, including gangs, sports teams, and school groups. The initiation can range from relatively minor pranks to patterns of behaviour that rise to the level of abuse or criminal misconduct. Hazing may include physical or psychological abuse. It may also include nudity or sexual assault.

Our trustees, staff and volunteers are alert to such behaviour and will act in line with our behaviour policy. We will consider if the police and The Integrated Front Door need contacting or if Early Help support should be offered.

Modern day slavery & Trafficking

Modern Slavery is a term used to describe anyone, including children who are exploited for criminal gain. The impact can be devastating for the victims. Modern Slavery comprises slavery, servitude, forced and compulsory labour and human trafficking. More information and the guidance we follow can be found [here](#).

COMMUNITY SAFETY AND LIAISING WITH THE POLICE

In emergencies we will ring 999. [NPCC- When to call the police](#) supports us to understand when we should consider calling the police and what to expect when we contact the police.

Community safety incidents in the vicinity, such as people loitering and unknown adults talking to children and young people, will be reported to the police and a school safe incident report form completed and uploaded to the Extranet.



HONOUR BASED ABUSE (Including Female Genital Mutilation and Forced Marriage)

So-called 'honour-based' abuse (HBA) includes crimes which have been committed to protect or defend the honour of the family and/or the community, including Female Genital Mutilation (FGM), forced marriage, and practices such as breast ironing. Abuse committed in the context of preserving 'honour' often involves a wider network of family and community pressure and can include multiple perpetrators. It is important that we are aware of this dynamic and additional risk factor when deciding what action to take. All forms of so-called Honour based abuse (regardless of the motivation) will be handled and escalated as appropriate.

If our trustees, staff and volunteers have concerns about HBA they will speak to the Designated Safeguarding Lead (DSL) who will refer to The Integrated Front Door. Should Social Care intervention not be required Early Help will be offered.

Information on Breast Ironing and Forced Marriage is available below:

[Forced Marriage](#) and [Breast Ironing](#)

FEMALE GENITAL MUTILATION (FGM)

FGM comprises all procedures involving partial or total removal of the external female genitalia or other injury to the female genital organs. It is illegal in the UK and a form of child abuse with long-lasting harmful consequences.

Indicators of risk:

- Victims are likely to come from a community that is known to practice FGM.
- Any girl born to a woman who has been subjected to FGM.
- Any girl who has a sister who has undergone FGM.
- Girls taken abroad at start of school holidays.
- Parents state that they or a relative will take the child out of the country for a prolonged period.
- A professional hears reference to FGM in conversation e.g., a child may tell other children about it.

Indicators of FGM:

- Girl may have difficulty walking, sitting or standing.
- May spend longer in the bathroom or toilet owing to difficulties in urinating.
- Recurrent urinary tract infections or complaints of abdominal pain.
- Spending longer periods away from the classroom.

- Refusing to participate in P.E. regularly without a medical note.
- Prolonged absence from school with noticeable behaviour changes on return.

FGM Mandatory Reporting Duty

Section 5B of the Female Genital Mutilation Act 2003 (as inserted by section 74 of the Serious Crime Act 2015) places a statutory duty upon **teachers**, along with social workers and healthcare professionals, to report to the police where they discover (either through disclosure by the victim or visual evidence) that FGM appears to have been carried out on a girl under 18. Those failing to report such cases will face disciplinary sanctions.

Teachers **must** report to the police cases where they discover that an act of FGM appears to have been carried out, by telephoning 101.

All trustees, staff and volunteers who are concerned about FGM will speak to the Designated Safeguarding Lead who will contact The Integrated Front Door. See flow chart in Appendix 17

- Online E- Learning training on FGM is available [here](#)
- Multi agency statutory guidance on FGM 2020 can be found [here](#)

RADICALISATION AND EXTREMISM

Radicalisation refers to the process by which a person comes to support terrorism and forms of extremism. There is no single way of identifying an individual who is likely to be susceptible to an extremist ideology. Specific background factors may contribute to vulnerability which are often combined with specific influences such as family, friends or online, and with specific needs for which an extremist or terrorist group may appear to provide an answer. The internet and the use of social media in particular has become a major factor in the radicalisation of young people.

As with managing other safeguarding risks, our trustees, staff and volunteers are alert to changes in children and young people's behaviour which could indicate that they may be in need of help or protection.

Prevent

From 1 July 2015 specified authorities, including all schools as defined in the summary of this guidance, are subject to a duty under section 26 of the Counterterrorism and Security Act 2015 ("the CTSA 2015"), in the exercise of their functions, to have "due regard to the need to prevent people from being drawn into terrorism, also known as the Prevent duty. Bodies to which this duty applies must have regard to statutory guidance issued under section 29 of the CTSA 2015.

Prevent [Guidance](#) (2023) summarises the requirements for education.

We understand the risks affecting children and young people and understand how to identify individual children and young people who may be susceptible to radicalisation and what to do to support them. We will assess the risk of children being drawn into terrorism, including support for extremist ideas such as Islamist extremism, Extreme Right Wing and Online Extremism.

As part of this Duty our Designated Safeguarding Lead will:

- undertake Prevent awareness training and be able to provide advice and support to other members of trustees, staff and volunteers on protecting children and young people from the risk of radicalisation.
- ensure that children and young people are safe from terrorist and extremist material when accessing the internet with us and ensuring that suitable filtering are in place.
- ensure that the Prevent duty for Education is fully met as part of a risk assessed approach.
- ensure trustees, staff and volunteers have accessed training and are clear on the definition of Extremism, Radicalisation and Terrorism (KCSIE, 2024 p. 156)

We refer to [Managing risk of radicalisation](#) and utilise the 'Educate Against Hate' [website](#) which provides us with information, tools and resources to recognise and address extremism and radicalisation. Training on making Prevent referrals and E- learning will be accessed [here](#).

Support and guidance will be gained from community.safety.services@bolton.gov.uk and Bolton Councils [Safeguarding Against Harmful Radicalisation handbook](#).

Channel

Channel is a programme which focuses on providing support at an early stage to people who are identified as being vulnerable to being drawn into terrorism. It provides a mechanism for schools to make referrals if they are concerned that an individual might be vulnerable to radicalisation.

Channel awareness guidance will be accessed from the home office [here](#) along with The Home Office [Prevent and Channel Fact Sheet](#)

If our trustees, staff and volunteers have any concerns about an individual, a channel referral form will be completed. Support may be accessed through the Channel Coordinator Tel: 0161 227 3543 Mobile: 07980968857 or Counter [Counter Terrorism Policing](#) . Bolton's Channel Panel referrals go to: Channel.project@gmp.pnn.police.uk OR gmchannel@manchester.gov.uk

CHILDREN WITH FAMILY MEMBERS IN PRISON

Approximately 200,000 children have a parent sent to prison each year. These children are at risk of poor outcomes including poverty, stigma, isolation, and poor mental health.

National Intervention for Children with Parents in Custody ([NICCO](#)) provides information designed to support our trustees, staff and volunteers working with offenders' children, to help mitigate negative consequences for those children and young people. For further information [here](#). We will always consider if any child and young person with a family member in prison would benefit from Early Help interventions.

HOMELESSNESS

Being homeless or being at risk of becoming homeless presents a real risk to a child's welfare. Indicators that a family may be at risk of homelessness include household debt, rent arrears, domestic abuse and anti-social behaviour, as well as the family being asked to leave a property. Referrals and or discussion with housing will take place as appropriate however this does not, and will not, replace a referral into The Integrated Front Door.

The Homelessness Reduction Act 2017 places a legal duty that everyone who is homeless or at risk of homelessness will have access to meaningful help. The duties shift focus to early help and encourage families at risk to seek support as soon as possible, before they are facing a homelessness crisis.

MENTAL HEALTH

All trustees, staff and volunteers are aware that mental health difficulties can, in some cases, be an indicator that a child or young person has suffered or is at risk of suffering abuse, neglect or exploitation.

Only appropriately trained professionals should attempt to make a mental health diagnosis. Our trustees, staff and volunteers, however, are well placed to observe children and young people day-to-day and identify those whose behaviour suggests that they may be experiencing a mental health difficulty or may be at risk of developing one.

Where children and young people have suffered abuse and neglect, or other potentially traumatic adverse childhood experiences (known as [ACE's](#)), this can have a lasting impact throughout childhood, adolescence and into adulthood. It is important that our trustees, staff and volunteers are aware how experiences, can impact on behaviour and education.

We promote positive emotional wellbeing in a number of ways, these include building resilience, promoting healthy lifestyles and recognising what a healthy relationship is.

Children and young people requiring mental health support.

We recognise that we have an important role to play in supporting the mental health and wellbeing of our children and young people.

We have specific trustees, staff and volunteers who are trained to identify possible mental health difficulties and are aware of support services available. We signpost to: Bolton's *The Be Kind to My Mind* [Website](#) and refer to Bolton's Suicide and Self harm pathway.



Feb 2022 Bolton Self
Harming behaviour P:

Where a child and young person requires support with their mental health/ emotional wellbeing we will:

- Phone 999 in an emergency and follow the pathway above.
- Contact the child and young person's parent/carer and advise if medical attention is needed.
- Consider if a referral is required to The Integrated Front Door and/or CAMHS.
- Complete an Early Help assessment and support the child and young person/family by using the Early Help process.
- Consider putting a safety plan in place in order to protect the child and young person and others.
- Access a range of advice and support from specialist mental health services to help us to identify what extra support can be provided.

More information is available at [mental health and behaviour in school's guidance](#) and [Education Recovery Support](#) following the COVID Pandemic. Resources are also available [here](#).

Our Senior Mental Health Lead is Mrs Wilson

Behaviour and safeguarding

We are aware that a child and young person's behaviour may be communicating that they could have suffered from abuse, neglect and exploitation. The behaviour that is being displayed could be 'distressed behaviour'.

If we have serious concerns about a child and young person's behaviour, we will follow our behaviour policy and will also consider whether a multi-agency assessment such as an early help assessment or statutory assessment is required (see guidance [Working Together to Safeguard Children](#))

Where a child and young person is placed in an alternative provision, we continue to be responsible for the safeguarding of that child and young person and will take steps to ensure we are satisfied that the placement meets their needs.

For further guidance we will refer to DfE Behaviour Guidance (2024) [Behaviour in schools](#).

ATTENDANCE AND CHILDREN WHO ARE MISSING EDUCATION

Children being absent from education for prolonged periods and/or on repeat occasions can act as a vital warning sign to a range of safeguarding issues. It is important we respond to persistently and severely absent children and young people to explore and identify the barriers and ensure support is put in place.

The law requires us to have an admission register and an attendance register. All children and young people must be placed on both registers. We follow LA [Guidance for schools on removing a pupil from the school roll](#).

We complete the web-based form as soon as one of the grounds for deletion has been met and not later than the date on which the children and young people' name is deleted from the register - <http://www.bolton.gov.uk/schoolsadminremove>

If child is believed to have left Bolton with no forwarding address of travel evidence complete the attached CME 1A form and send it back to onrollgonemissing@bolton.gov.uk .The child remains on role until reasonable checks have been carried out to ascertain the whereabouts under 9(1)(i) School Attendance(Pupil Registration)(England) Regulations 2024 (See attached for the 15 grounds) Any other related CME enquires are e mailed to:

childrenmissingeducation@bolton.gov.uk

For any child and young person who is absent and has a child protection plan in place or is looked after but placed at home, we will contact the Early Intervention Service on the first day of absence before 10:30am on 01204 334220. The Early Intervention Service duty team will then conduct a home visit.

When a child and young person has persistent or severe absence, all avenues of support will be facilitated through the Early Help process, but if severe absence for unauthorised reasons continues, this may constitute neglect. We will consider any potential safeguarding factors and will consider if a referral to the Integrated Front Door is required.

We will also adhere to the DfE Guidance for School Attendance [School attendance: guidance for schools - GOV.UK \(www.gov.uk\)](#)

Also see our attendance policy.

CHILDREN GOING MISSING

If a child leaves site without permission or the child cannot be located the Safeguarding lead will be informed and parents will be contacted. All efforts will be made to locate the child. The risks will be assessed, such as age and vulnerability of the child and any associated risks i.e. self-harm or exploitation and if appropriate the police will be contacted. We will follow the procedures outlined in the School's Missing Guidance and adopt them for BYB@Blackrod.



**Updated document due from Bolton Council

LATE COLLECTION OR NON COLLECTION OF A CHILD AT THE END OF THE SCHOOL DAY

If a parent/carer does not arrive to collect a child, efforts to contact the parent/carer and all other emergency contacts will be made. If a child has a social worker social care will be contacted. If all efforts have been exhausted, where possible we will make a home visit, if this is unsuccessful then the police will be contacted. Depending on the reason for the late/non collection we will monitor the situation and if this re-occurs Early Help or a referral to the Integrated Front Door will be considered.

LOOKED AFTER CHILDREN

Under the Children Act (1989), a child is looked after if he or she:

- Is provided with accommodation, for a continuous period of more than 24 hours, [Children Act 1989, Section 20 and 21]
- is subject to a care order [Children Act 1989, Part IV]
- is subject to a placement order.

We will ensure that appropriate trustees, staff and volunteers have the information they need in relation to a child and young person's looked after legal status and support contact arrangements with birth parents or those with parental responsibility. We shall also have information about the child and young person's care arrangements and the levels of authority delegated to the carer by the Local Authority looking after him/her.

The Designated Lead

Our Designated Lead is Mrs Wilson and they will work with the local authority to promote the educational achievement of our registered children and young people who are looked after. With the commencement of sections 4 to 6 of the Children and Social Work Act 2017, our Designated Lead has responsibility for promoting the educational achievement of children who have left care through adoption, special guardianship, or child arrangement orders.

For further information on the role of the Designated Lead please see Appendix 13 and the following [link](#).

Virtual School Head

The Virtual School Head is the lead responsible officer for ensuring that arrangements are in place to improve the educational experiences and outcomes of a local authority's looked-after children, including those placed out-of-authority. The Virtual School Head should ensure the educational attainment and progress of children looked after by the local authority are monitored and evaluated as if those children attended a single school. The Virtual School Head is also responsible for managing pupil premium plus for looked-after children.

Our Designated Lead works with the Virtual School Head to promote the educational achievement of previously looked-after children, including discussing how funding can be best used to support the progress of looked after children in the school and meet the needs identified in the child's Personal Education Plan (PEPs).

In addition, the Virtual School has a non-statutory responsibility for oversight of attendance, attainment and progress of children with a social worker.

The Local Authority Virtual School Head is Lindsay Nelson- 07385 361924

Lindsay.Nelson2@bolton.gov.uk. More information on the Virtual School can be found [here](#).

PRIVATE FOSTERING

By law our Local Authority must be notified when parents make arrangements for their child to be cared for by friends, neighbours or extended family for more than 28 days. When parents make plans for their child to be cared for like this it is called a Private Fostering Arrangement.

If a member of trustees, staff and volunteers believes a child may be privately fostered, they must inform the Designated Safeguarding Lead, who will contact the Integrated Front Door. More information can be found [here](#).

SPECIAL EDUCATIONAL NEEDS AND DISABILITIES

Children and young people with special educational needs and disabilities (SEND) can face additional safeguarding challenges. We are aware that additional barriers can exist when recognising abuse and neglect in this group of children and young people. We will ensure that:

- We do not make assumptions that indicators of possible abuse such as behaviour, mood and injury relate to the child and young person's disability without further exploration.
- We consider that children and young people with SEN and disabilities may be disproportionately impacted by behaviours such as bullying, without outwardly showing any signs.
- Communication barriers do not prevent us from gaining the children and young people views and we will be creative in overcoming any potential difficulties.
- The SENCO will be liaised with when there are any reports of abuse for children with SEND.

We refer to guidance on [Reducing the need for Restraint](#) and restrictive intervention in regards to supporting children and young people with learning disabilities, autistic spectrum conditions and mental health difficulties who are at risk of intervention. We also signpost families to [Bolton's SEND local Offer](#) and refer to [SEND Code of Practice 0-25yrs](#), and [Supporting Children and young people with Medical Conditions](#).

See our SEND policy.

THE CHILD'S VOICE AND THEIR DAILY LIVED EXPERIENCES

We are proactive and take positive steps to inform children and young people of their rights to safety and protection and the options available to express their fears or concerns. We have systems in place to ascertain our children and young people wishes and feelings and understand their daily lived experiences. Where there is a safeguarding concern, we seek the views of the child and young person. All our systems operate with the children and young people' best interests at heart. Tools and resources are available [here](#).

WHISTLEBLOWING

Trustees, staff and volunteers should feel able to raise concerns about poor or unsafe practice and potential failures in our safeguarding regime.

Our Whistleblowing policy enables trustees, staff and volunteers to raise concerns or allegations in confidence and for a sensitive enquiry to take place. All concerns of poor practice or concerns about a child's welfare brought about by the behaviour of colleagues should be reported to the Headteacher. Complaints about the Headteacher should be reported to the chair of governors.

Trustees, staff and volunteers can also refer to the NSPCC Whistleblowing Advice Line if:

- They feel we don't have clear safeguarding procedures to follow.
- Their concern won't be dealt with properly or may be covered-up
- They have raised a concern, but it hasn't been acted upon
- They are worried about being treated unfairly.

Trustees, staff and volunteers can call about an incident that happened in the past, is happening now or they believe may happen in the future. Whistleblowing Advice Line Call [0800 028 0285](tel:08000280285)
Email help@nspcc.org.uk-Whistleblowing Advice Line

RESOLVING DIFFERENCES AND ESCALATION PROCESS

We recognise that effective partnership working is a vital element in ensuring that children are safeguarded, and positive outcomes are achieved. However if we do need to challenge practice we will follow [Bolton's Challenge and Escalation processes](#).

MANAGING ALLEGATIONS AGAINST THOSE WHO WORK WITH CHILDREN

Bolton's ["First steps" flowchart](#) is displayed around our building and will be followed in the event that there is an allegation about a member of trustees, staff and volunteers, session staff volunteer or contractor (appendix 13).

We will not wait to act if a child and young person is at risk of significant harm, we will immediately contact the Police or [Integrated Front Door](#). We will also contact the Local Authority Designated Officer (LADO) Lisa Kelly – 01204 337474/0782 454 1233 LADO@bolton.gov.uk . A tracking form will be used to record all allegations and actions taken (appendix 12). We utilise information on managing allegations from Bolton Council [here](#) and The Safer Recruitment Consortium [Guidance for Safer Working Practice](#) .

Trustees, staff and volunteers who are the subject of an allegation

When an allegation is made against a member of our team, set procedures must be followed. Trustees, staff and volunteers who are the subject of an allegation have the right to have their case dealt with fairly, quickly and consistently and to be kept informed of its progress. Suspension is not mandatory, nor is it automatic but, in some cases, trustees, staff and volunteers may be suspended where this is deemed to be the best way to ensure that children and young people are protected. Arrangements will also be made to support the member of trustees, staff and volunteers against whom an allegation has been made.

Transferable risk

Where a member of trustees, staff and volunteers or volunteer is involved in an incident outside of work which did not involve children but could have an impact on their suitability to work with children, we will consider what triggered these actions and if there is any transferable risk to our children and young people.

Low Level concerns

We promote an open and transparent culture in which all concerns about all adults working in or on behalf of BYB@Blackrod (including sessional staff, volunteers, and contractors) are dealt with promptly and appropriately.

The term 'low-level' concern does not mean that it is insignificant. A low-level concern is any concern – no matter how small, and even if no more than causing a sense of unease or a 'nagging doubt' that an adult working in or on behalf of the school or college may have acted in a way that is inconsistent with the trustees, staff and volunteers code of conduct, including inappropriate conduct outside of work and does not meet the harm threshold or is otherwise not serious enough to consider a referral to the LADO.

Low level concerns will be reported to the Headteacher who will record the concern. The Headteacher will always be made aware and make the final decision on how to respond. Consultation will be made with the LADO if it is unclear if it is a low-level concern or the concern meets the harm threshold. Any repeated concerns or allegations which do not meet the harm threshold which have all be found to be false, unfounded, unsubstantiated, or malicious will not be included in any reference. Substantiated safeguarding allegations that meet the harm threshold will be included in references. See Part Four, section two of [KCSiE](#).

More information on managing allegations can be found [here](#).

Also see our Trustees, staff and volunteers behaviour, conduct and grievance policies.

SAFER RECRUITMENT

We will prevent people working here who pose a risk of harm by adhering to statutory responsibilities and checking our trustees, staff and volunteers using the [Disclosure and Barring Service](#). We take proportionate decisions on whether to ask for any checks beyond what is required and ensure volunteers are appropriately supervised. We have written recruitment and selection policies and procedures in place. We utilise information from [The Safer Recruitment Consortium](#) in particular [Guidance for Safer Working Practice](#) for those working in Education settings.

At least one person who conducts the recruitment process and interview has completed safer recruitment training.

Also see our safer recruitment policy/ Safeguarding, disclosure, and barring policy

ARRANGEMENTS FOR INDIVIDUALS COMING ONTO OUR PREMISES

When services or activities are provided, under the direct supervision or management of our trustees, staff and volunteers, our arrangements for child protection will apply to those services /activity providers. An assessment of the education value, the age appropriateness of what is going to be delivered and whether relevant checks will take place.

However, where services or activities are provided separately by another body, we seek assurance that the body concerned has appropriate safeguarding and child protection policies and procedures in place (including inspecting these as needed); and ensure that there are arrangements in place to liaise with us on these matters where appropriate.

We ensure safeguarding requirements are included in any transfer of control agreement (i.e., lease or hire agreement), as a condition of use and occupation of the premises; and that failure to comply with this would lead to termination of the agreement.

See Security Policy

USEFUL TELEPHONE CONTACT NUMBERS

- Integrated Front door- Targeted Early Help and Children's Social Care: 01204
331500
- Emergency Duty Team – Out of Hours: 01204
337777
- Children's Social Care- Child Protection Unit: 01204
337479
- Lisa Kelly- Local Authority Designated Officer (LADO): 01204
337474/**07824541233**
- Jo Nicholson - Safeguarding in Education Team: **07917072223**/01204
337472
- Natalie Mckeon– Safeguarding in Education Team: **07384234744**/01204
331314
- Lindsay Nelson- Virtual School Head: 07385
361924
- Shona Green – Bolton Safeguarding Children Partnership Officer: 01204
337964
- Child Missing Education 01204
334036

APPENDIX 1

Summary of the Child Protection and Safeguarding Children Policy. These procedures are for Teaching, Non-Teaching, Contractors, Supply Trustees, staff and volunteers and Volunteers

The summary of this policy and procedures is shown below and a copy of this, including the categories of Abuse (from Working Together to Safeguard Children 2023 & Keeping Children Safe in Education September 2024) will be issued to **all** trustees, staff and volunteers both permanent and temporary, and to any volunteers or contractors who work with the children.

All teaching, non-teaching, volunteers, contractors, and trustees, staff and volunteers engaged or employed by us have a duty to report and refer any concerns they may have to the Designated Safeguarding Lead who has overall responsibility for child protection matters. This is:

Mrs Victoria Wilson and Mrs Katherine Mead

Definitions/categories of abuse are shown below, you are expected to familiarise yourself with them.

<p>Physical Abuse (intentional act causing physical injury or trauma)</p> <ul style="list-style-type: none">• Physical injury of any form (hitting, biting, burning, shaking)• Giving drugs including alcohol• When a parent or carer fabricates the symptoms of, or deliberately induces illness.	<p>Sexual Abuse</p> <ul style="list-style-type: none">• Penetrative or non-penetrative acts by males or females• Showing of pornographic material• Includes online.
<p>Emotional Abuse</p> <ul style="list-style-type: none">• Persistent lack of affection• Constant threatening behaviour• Constant overprotection• Unrealistic pressure to perform to high expectations.• Exposure to domestic abuse the abuse can encompass but not limited to, psychological, physical, sexual, financial or emotional. Children may see or hear	<p>Neglect</p> <ul style="list-style-type: none">• Persistent failure to meet basic needs.• Failure to protect from harm.• Failure to access medical treatment.• Inadequate supervision

domestic abuse or suffer domestic abuse in their own intimate relationships.

Other

- Harm outside the home- Exploitation sexual or Criminal including county lines, Online Safety, grooming, Radicalisation/Extremism.
- Female Genital mutilation
- Modern day slavery, Breast Ironing and Honour based abuse.
- Trustees, staff and volunteers need to be fully aware of the dangers and risks associated with online communications. Consequently, they **MUST** ensure that they do **NOT** engage in inappropriate online communication of any kind with children and young people.

A child and young person may seek out an individual teacher/adult to share information specifically about abuse, neglect and exploitation, or may talk spontaneously, individually or in a group when trustees, staff and volunteers or volunteers are present. Anyone hearing an allegation from a child that abuse has, or may have, occurred should:

<p>Receive</p> <ul style="list-style-type: none"> • What is said • Accept what you are told – you do not need to decide whether or not it is true • Listen without displaying shock or disbelief. 	<p>Reassure</p> <ul style="list-style-type: none"> • The child and young person • Acknowledge their courage in telling you. • Do not promise confidentiality. • Remind them they are not to blame – avoid criticising those accused. • Do not promise that “everything will be alright now” (it might not be).
<p>React</p> <ul style="list-style-type: none"> • Calmly, respond to the child and young person but do not interrogate. • Avoid leading questions but ask open ended ones. • Clarify anything you do not understand. 	<p>Record</p> <ul style="list-style-type: none"> • Make notes as soon as possible – (during the conversation if you can) • Include: Time, Date, Place, and the child and young person’s own words – do NOT assume: Ask “Please tell me what that means”. • Describe observable behaviour.

<ul style="list-style-type: none"> • Explain what will happen next i.e., inform the Designated Safeguarding Lead. 	<ul style="list-style-type: none"> • Do not destroy original notes – they may be needed later. Upload to electronic system such as CPOMS.
--	--

Support

- Consider what support is needed for the child and young person, you may need to give them a lot of your time.
- Ensure you are supported; such conversations can be extremely stressful and time consuming.
- Talk to your Designated Safeguarding Lead/Headteacher/Line Manager

It is important that if the DSL/DDSL is unavailable, to reduce delay, trustees, staff and volunteers refer directly to **The Integrated Front Door to ensure the safety, welfare, and protection of the child and young person Telephone- 01204 331500.**

It must be acknowledged that some children may not feel ready or able to disclose abuse. They may not recognise that the abuse, neglect or exploitation that they are experiencing is harmful. They may be embarrassed or have vulnerabilities, such as disability or language barriers. This will not prevent trustees, staff and volunteers from having professional curiosity and they should always discuss with the DSL if there are concerns about a child and young person.

We aim to support children and young people at the earliest opportunity and will utilise Early Help processes [here](#)

Where there are concerns regarding a trustees, staff and volunteers member, volunteer, or contractor the Headteacher must be informed immediately.

APPENDIX 2

Child Protection and Safeguarding Policy for Parents and Carers

Introduction

We strive to ensure that all our children and young people remain safe and free from harm, and we are committed to playing a full and active part in the multi-agency approach to child protection concerns. Additionally, we have a legal duty to safeguard and promote the welfare of children and young people, and to have a child protection policy and procedures in place,

which should be shared with you, to address concerns about the safety and protection of children and young people.

Through our day-to-day contact with children and young people, and direct work with families, our trustees, staff and volunteers have a crucial role to play in noticing indicators of possible abuse, neglect, and exploitation. Parents/carers should be aware therefore, that where it appears to a member of trustees, staff and volunteers that a child or young person may have been abused, we are required, as part of the local child protection procedures to report this concern to Children's Social Care (known as the Integrated Front Door) immediately. Therefore, to avoid any misunderstandings, parents/carers of children and young people who sustain accidental injuries such as cuts/bruises/fractures should inform us **without delay** and explain the cause.

<p>Principles</p> <ul style="list-style-type: none"> • Children and young people have a right to be safe. • Parents/carers have a right to be informed of any concerns. • Children and young people are best protected when we work together with parents/carers. 	<p>Partnership</p> <ul style="list-style-type: none"> • Please speak to us if you have any concerns. • We will inform parents/carers of any concerns we have and will offer help and support as necessary. • We will seek your consent to share information*. • We will involve you and actively encourage you to participate in any meetings regarding your child. • We will consult with other agencies when we have concerns that a child or young person may have been abused, neglected, or exploited. <p>* (providing this does not compromise safety. Please note consent can be overridden for Child Protection purposes).</p>
<p>Prevention</p> <ul style="list-style-type: none"> • We aim to offer help and support at the earliest opportunity as needs emerge (Early Help). • We have a comprehensive PSHE curriculum that teaches 	<p>Responding to Concerns</p> <ul style="list-style-type: none"> • We will listen to parents/carers who raise concerns about their child and offer support. • We will refer all allegations or concerns that a child and young person has been, or is likely to be,

<p>our children and young people about keeping safe.</p> <ul style="list-style-type: none"> • We will take positive action to prevent children and young people from abuse, neglect, and exploitation through the development of an open culture that informs children and young people of their rights and encourages them to speak about any concerns. • We will provide parents/carers with information to help you to keep your child safe out of school. 	<p>abused, neglected, or exploited to The Integrated Front Door.</p> <ul style="list-style-type: none"> • We will put support in place as soon as we are aware of any concerns this may include completing an Early Help Assessment.
---	---

Child on Child Abuse

- Physical and emotional abuse of children by other children will not be tolerated and will be dealt with. Parents/carers will be kept informed of actions taken. Concerns that meet the significant harm threshold will be referred immediately to Children's Social Care (The Integrated Front Door).
- Parents/carers or children and young people can report abuse by contacting social care on 01204 335100. Sexual abuse can also be reported through a [Dedicated helpline for victims of abuse in schools | NSPCC](#) and [Stop abuse together \(campaign.gov.uk\)](#)
- We will ensure children and young people are believed and listened to and support is put in place. This may include a safety plan. Sanctions will be put in place where required.

Emotional health and wellbeing

- We aim to support any children and young people who experience any difficulties with their emotional health and wellbeing. Please speak to a member of trustees, staff and volunteers for more details and support can be accessed at Be Kind to My Mind [here](#)

Domestic Abuse

- As part of Operation Encompass, we receive notifications from the police relating to domestic incidents where there are children related to either of the adult parties involved. The aim is for us to offer advice and support.
- Parents and carers are encouraged to speak to us about domestic abuse.
- Services can be accessed at Fortalice 0800 2000247 and 01204 365677 and Endeavour 01204 394842

Online Safety

- Children can be harmed and abused online and therefore we have measures in place to protect them. We also teach children and young people how to keep safe online.
- It is important that Parents/carers have adequate safety measures in place at home, that children receive consistent messages of how to keep safe online and that they are appropriately supervised.

Child Protection Strategy Meetings and Conferences

- If circumstances require, a member of our trustees, staff and volunteers will attend strategy meetings and child protection conferences and will share information. This information will be shared with parents/carers beforehand where possible. We will keep confidential child protection records separately from a child and young person's academic and other records. And these will be transferred to their future school/college.

Confidentiality

- Information from any source, including parents, about possible child abuse cannot be kept confidential.
- Information and records about children who are the subject of a Child Protection Plan will be given only to those people who need it and will be kept strictly confidential by them.

If parents have any concerns, they should contact:

Mrs Victoria Wilson or Mrs Katherine Mead

***Sent via email/parent app Autumn Term 1 2024**

APPENDIX 3

ROLE OF THE DESIGNATED SAFEGUARDING LEAD (DSL) See Annex C – [KCSIE 2024](#)

The Designated Safeguarding Lead takes **lead responsibility** for safeguarding and child protection (including online safety and understanding the filtering and monitoring systems and processes in place). The DSL is a **Senior Leader**, and the role of the DSL is outlined in their job description. The DSL is given the additional time, funding, training, resources, and appropriate support they need to carry out the role effectively.

Deputy Designated Safeguarding Leads (DDSL) Mrs Katherine Mead

In addition to the DSL, there is at least one Deputy Designated Safeguarding Lead. Any deputies are trained to the same standard as the DSL and their role is explicit in their job description. The activities of the DSL can be delegated to appropriately trained deputies, however, the ultimate lead responsibility for child protection, as set out above, cannot be delegated and so, remains with the DSL.

Availability

During term time the DSL (or a deputy) will always be available (during opening hours) for trustees, staff and volunteers to discuss any safeguarding concerns. If they are not available in person, they will be available via phone/online. Adequate and appropriate cover arrangements for any out of hours/out of term activities will be arranged by the DSL.

Manage referrals.

The DSL will refer (and support trustees, staff and volunteers who refer):

- suspected abuse and neglect to children's social care (The Integrated Front Door)
- radicalisation concerns to the Channel panel
- cases where a person is dismissed or has left due to risk/harm to a child to the Disclosure and Barring Service as required
- cases where a crime may have been committed to the Police as required. [NPCC - When to call the police](#) will be consulted.

Working with others

The Designated Safeguarding Lead is expected to:

- act as a source of support, advice and expertise for all trustees, staff and volunteers.
- act as a point of contact with the three safeguarding partners (LA, Police and Health).

- liaise with the Headteacher or principal to inform them of issues- especially ongoing enquiries under section 47 of the Children Act 1989 and police investigations; This should include being aware of the requirement for children to have an Appropriate Adult. Further information can be found in the Statutory guidance –PACE Code C 2019 - GOV.UK (www.gov.uk)
- as required, liaise with the “case manager” (usually the headteacher/Principal) and the LADO at the local authority for child protection concerns in cases which concern a trustees, staff and volunteers member.
- liaise with trustees, staff and volunteers (especially teachers, pastoral support trustees, staff and volunteers, school nurses, IT trustees, staff and volunteers, and SENCOs or the named person with oversight for SEN) on matters of safety and safeguarding and welfare (including online and digital safety): when deciding if to make a referral, so that children's needs are considered holistically.
- liaise with mental health services, where safeguarding concerns are linked to mental health.
- promote supportive engagement with parents and/or carers in safeguarding and promoting the welfare of children, including where families may be facing challenging circumstances.
- promote educational outcomes by knowing the welfare, safeguarding and child protection issues that children in need are experiencing, or have experienced, and is therefore best placed to identify the impact that these issues might be having on children's attendance, engagement and achievement.

Working with the Headteacher, the Designated Safeguarding Lead takes lead responsibility for:

- ensuring that the school knows its cohort of children and young people who currently need a social worker are, understanding their academic progress and attainment, and maintaining a culture of high aspirations for this cohort.
- support teaching trustees, staff and volunteers to feel confident to provide additional academic support or reasonable adjustments to help children who need or have needed a social worker reach their potential, recognising that even when statutory social care intervention has ended, there is still a lasting impact on children's educational outcomes.

Raising Awareness

The DSL will:

- ensure child protection policies are known, understood, and used appropriately. Ensure that our child protection policy is reviewed annually (as a minimum) and the procedures and implementation are updated and reviewed regularly. Work with governing bodies /proprietors regarding this; and ensure the child protection policy is available publicly. Ensure parents are aware of the fact that referrals about suspected abuse, neglect or exploitation may be made and our role in this.

- link with Bolton Safeguarding Children Partnership arrangements to make sure trustees, staff and volunteers are aware of any training opportunities and the latest local policies on local safeguarding arrangements.
- raise awareness of the lasting impact of adversity and trauma on education, behaviour, mental health and wellbeing, so that this is understood by senior leaders and trustees, staff and volunteers and reflected in relevant policies (for example, mental health and behaviour).

Training, knowledge and skills

The DSL (and any deputies) will undergo training to provide them with the knowledge and skills required to carry out the role. This training will be updated at least every two years. The DSL also undertakes additional Prevent training.

A DSLs knowledge and skills will be continuously refreshed via newsletters, meetings, other DSLs, or simply taking time to read and digest safeguarding developments.

The DSL will:

- be alert to the specific needs of children in need, those with special educational needs and young carers.
- understand the lasting impact that adversity and trauma can have, including on children's behaviour, mental health and wellbeing, and what is needed in responding to this in promoting educational outcomes.
- understand and support with the requirements of the Prevent duty and be able to provide advice and support to trustees, staff and volunteers on protecting children from the risk of radicalisation.
- understand the unique risks associated with online safety and be confident that they have the relevant knowledge and up to date capability required to keep children safe whilst they are online at school.
- recognise the additional risks that children with SEN and disabilities (SEND) face online, for example, from online bullying, grooming and radicalisation and be confident they have the capability to support children with SEND to stay safe online.

Understanding processes and procedures

The DSL:

- understands the assessment process for providing early help and statutory services, including the Framework For Action (Bolton's Threshold document) and local authority children's social care referral arrangements (The Integrated Front Door);

- has a working knowledge of how a child protection case conference and a child protection review conference is conducted and be able to attend and contribute to these effectively when required to do so.
- understands the importance of the role the Designated Safeguarding Lead has in providing information and support to children social care in order to safeguard and promote the welfare of children.

Providing support to trustees, staff and volunteers

The DSL will:

- ensure each member of trustees, staff and volunteers has access to, and understands, our child protection policy and procedures, especially new and part time trustees, staff and volunteers.
- ensure that trustees, staff and volunteers are supported during the referrals processes; and
- support trustees, staff and volunteers to consider how safeguarding, welfare and educational outcomes are linked, including to inform the provision of academic and pastoral support.

Information sharing and managing the child protection file.

Information sharing is vital in identifying and tackling all forms of abuse and neglect, and in promoting children's welfare, including their educational outcomes. We have clear powers to share, hold and use information for these purposes.

The DSL is responsible for ensuring that child protection files are kept up to date and stored securely. They ensure the file is only accessed by those who need to see it and where the file or content within it is shared, this happens in line with information sharing advice as set out in [Keeping Children Safe in Education](#) 2024.

Where children and young people leave, the DSL will ensure their child protection file is transferred to the new school as soon as possible, and within 5 days for an in-year transfer or within the first 5 days of the start of a new term. This will be transferred separately from the main child and young person file, ensuring secure transit, and confirmation of receipt should be obtained. Receiving schools should ensure key trustees, staff and volunteers such as Designated Safeguarding Leads and SENCOs are aware as required.

The DSL will also consider if it would be appropriate to share any additional information with the new school in advance of a child and young person leaving in order to help them put in place the right support to safeguard the child and young person and to help the child and young person thrive in the school. For example, information that would allow the new school to continue supporting children who have had a social worker and been victims of abuse and have that support in place for when the child arrives.

Holding and sharing information

The DSL:

- understands the importance of information sharing, both within our setting, and with other schools on transfer including in-year and between primary education, and with the three safeguarding partners, other agencies, organisations and practitioners.
- understands relevant data protection legislation and regulations, especially the Data Protection Act 2018 and the General Data Protection Regulation.
- keep detailed, accurate, secure records of all concerns, discussions and decisions made including the rationale for those decisions. This will include instances where referrals were or were not made to another agency.

We follow [ICO Guidelines](#) and the [Data protection toolkit for schools](#). The Data Protection Act 2018 and GDPR do not prevent, or limit, the sharing of information for the purposes of keeping children safe. Fears about sharing information must not be allowed to stand in the way of the need to promote the welfare and protect the safety of children. Trustees, staff and volunteers have regard to the Department for Education Guidance; *Information Sharing Advice for Safeguarding Practitioners (2024)* [Safeguarding practitioners information sharing advice](#)

Understanding the views of children

The DSL will:

- encourage a culture of listening to children and young people and taking account of their wishes and feelings, among all trustees, staff and volunteers, and put in place any measures to protect them
- understand the difficulties that children and young people may have in approaching trustees, staff and volunteers about their circumstances and consider how to build trusted relationships which facilitate communication.

APPENDIX 4

GUIDANCE FOR SAFEGUARDING RECORDS

What is a “welfare concern”?

Concerns may arise in one or more of the following areas:

- The child and young person's behaviour
- The child and young person has a physical injury.
- The child and young person makes a disclosure or allegation.
- The child and young person's physical presentation

- Information from or observation of behaviour from a parent/carer or any other person

What to record

- Date and your details – avoid using initials.
- The incident / event / observation of concern described clearly and concisely.
- Written using straightforward language and fact and opinion are differentiated.
- If recording a disclosure, the child and young person's own words are recorded and any questions asked are included.
- Physical marks and injuries are recorded on a body map where appropriate (See Appendix 6)
- Any action taken.
- Rationale for decision making.
- If using an electronic data base such as CPOMS scan in handwritten notes taken when a child and young person makes a disclosure and body maps when there is a physical mark or injury and make reference to this in the chronology.

How to record actions taken in response to trustees, staff and volunteers concerns

When a welfare concern is recorded, it is important that this is checked to ensure sufficient detail has been recorded and has been dated by the trustees, staff and volunteers member who has reported the concern. If a body map has been completed or there are any other documents referred to in the record, ensure these are attached and where appropriate are also dated and attached to CPOMS.

It is important that a record of the action taken in response to every welfare concern is documented. The level of detail of this record will clearly depend on the nature and seriousness of the concern but may include:

- Requests to trustees, staff and volunteers for monitoring specific aspects of the child and young person's presentation, behaviour, attendance etc.
- Discussions and telephone calls (with colleagues, parents, child and young person, Social Care and other agencies or services), including rationale, actions and outcomes.
- Professional consultations
- Letters sent and received.
- Early Help Assessments and reviews
- Any referrals (both for external and education-based services)

APPENDIX 5

Body Map Guidance

Body Maps should be used to document and illustrate visible signs of harm and physical injuries. Always use a black pen (never a pencil) and do not use correction fluid or any other eraser. Do not remove clothing for the purpose of the examination unless the injury site is freely available because of treatment.

Any concerns should be reported and recorded without delay to The Integrated Front Door or allocated social worker if already an open case to social care.

When you notice an injury, try to record the following information in respect of each mark identified e.g. red areas, swelling, bruising, cuts, lacerations and wounds, scalds and burns:

- Exact site of injury on the body, e.g., upper outer arm/left cheek.
- Size of injury – in appropriate centimetres or inches.
- Approximate shape of injury, e.g., round/square or straight line.
- Colour of injury – if more than one colour, say so.
- Is the skin broken?
- Is there any swelling at the site of the injury, or elsewhere?
- Is there a scab/any blistering/any bleeding?
- Is the injury clean or is there grit/fluff etc.?
- Is mobility restricted as a result of the injury?
- Does the site of the injury feel hot?
- Does the child and young person feel hot?
- Does the child and young person feel pain?
- Has the child and young person's body shape changed? Are they holding themselves differently?

Importantly the date and time of the recording must be stated as well as the name and designation of the person making the record. Add any further comments as required.

Ensure First Aid is provided where required and record this.

A copy of the body map should be kept on the child and young person's file.

APPENDIX 6

HOME ACCIDENT OR INJURY FORM

This form should be completed when a parent/carer informs us that a child and young person has sustained an injury or had an accident outside of school

Date Accident/Injury Reported:	
---------------------------------------	--

Name of child and young person:	
Class/Year Group:	

Person Reporting Incident:	
Relationship to child and young person:	

Date Accident Occurred:	
Place of Accident:	

Description of injury (complete body map if needed):

Brief detail of how the accident occurred:

--

Witnessed by:	
----------------------	--

First Aid Treatment given:	Yes <input type="checkbox"/>	No <input type="checkbox"/>
-----------------------------------	------------------------------	-----------------------------

Was Medical advice sought?	Yes <input type="checkbox"/>	No <input type="checkbox"/>
-----------------------------------	------------------------------	-----------------------------

If yes, when and where?	
-------------------------	--

Signed by parent/carer:	
--------------------------------	--

Member of trustees, staff and volunteers accident reported to:	
---	--

Name	Relationship to child	DOB/Age	Tel No

Significant Others (relatives, carers, friends, child minders, etc.)

Name	Relationship to child	Address	Tel No

Other Agency Involvement

Name of officer/person	Role and Agency	Status of Child i.e., EHA/CIN/CP/CLA	Tel No/email	Date

APPENDIX 7

TRANSFER OF SAFEGUARDING RECORDS

This form should be completed when a child and young person moves to another setting and there are safeguarding concerns and records to transfer.

Child and young person's name:

DOB:

Previous surnames or aliases:

Name of people with parental

Name of social worker/lead professional:

Information and files transferred (to include chronologies and assessments)

NB: Parental consent is needed to transfer Early Help Assessments

Name of sending school

Name of receiving school/college

Passed to (name)

Date of first entry in file

Date of last entry in file

Status: (please tick)

Single Agency Support (Prevention
threshold)

Early Help

Targeted Early Help

Child in Need

Child Protection

Looked After Child

Privately Fostered Child

Transferred by:

Received by:

Name:

Name:

Position:

Position:

Signed:

Signed:

Date:

Date:

Managing Professional Allegations (schools/colleges)

Local Authority Designated Officer (LADO)



Bolton Safeguarding Children

Concern/ Allegation raised

Do not wait to act if the child is at risk of significant harm; contact Police or [Integrated Front Door](#)

Concern/Allegation is passed to the Headteacher (Chair of Govs/trustees if allegation is against HT)

Try not to question the victim/witness just fully record the initial account and what you observed

Headteacher considers if the person who works with children has:

- behaved in a way that has harmed a child or may have harmed a child
 - possibly committed a criminal offence against or related to a child
 - behaved towards a child or children in a way that indicates he or she may pose a risk of harm if they work regularly or closely with children
 - behaved or may have behaved in a way that indicates they may be unsuitable to work with children
- [See also Things to Think About document](#)

Yes

Criteria met

No

Headteacher makes a referral to LADO within **one** working day

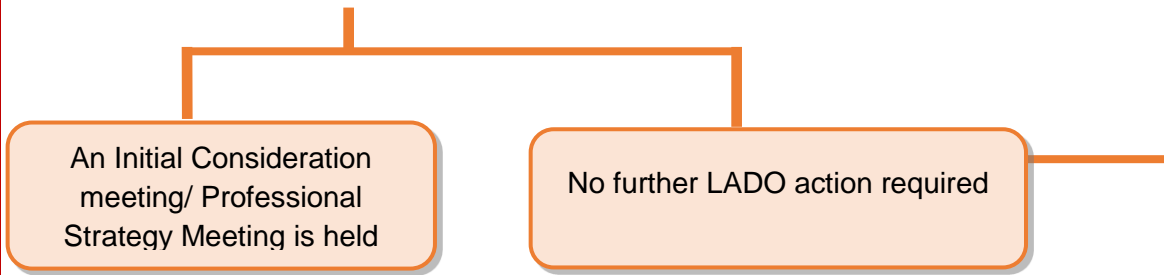
E-mail Referral Form to LADO@bolton.gov.uk

or for consultation/discussion call
01204 337474/ 07824541233

LADO provides advice and guidance if needed. Head Teacher agrees / decides if internal action is required.

Record action, rationale and relevant outcomes.

Headteacher & LADO agree next steps
(This could include intervention from Social Care and Police)



Bolton LADO - Lisa Kelly

Tel - 01204 337474

LADO@bolton.gov.uk

[LADO Webpage](#)

APPENDIX 9

Tracking Form

Allegation/concern raised against Trustees, staff and volunteers

When an allegation/concern is identified brief details should be obtained and passed to the Headteacher as soon as possible.

Date:		Time	
Allegation/Concern made by:			
Who the allegation/concern is made against:			
<i>NB: The subject of the allegation should not be informed without first seeking advice</i>			
Allegation/concern first received by:			
Brief details of the allegation:			
Date of alleged/concern incident:			
Does this allegation involve a restraint?	YES / NO / NYK		

Case manager appointed and to complete tracking form	
--	--

--	--

Allegations which appear to meet the criteria should be referred to LADO within 24 hours (see Note 1)

Does this appear to meet the criteria for a LADO referral?	YES / NO
If no, are you recording the incident as a Low-Level Concern?	YES / NO If you answer Yes- Record rationale for decision making here:
Referred to LADO:	YES / NO Date:
Advice given:	
Date:	
Action to be taken:	
<i>Suspension should never be automatic but should be considered and rationale given for decisions made.</i>	Decision to suspend YES / NO / NA

Information gathered about the allegation.

Trustees, staff and volunteers witnesses	Account taken	Copy forwarded to LADO
1.		
2.		
3.		
Child and young person witnesses		
1.		
2.		
3.		
4.		
Plan of setting/classroom etc		
Chronology of events		
1 st Aid log		

Full details gathered.

Child and young person name:	
Date of Birth	
Address:	
Is the child and young person known to Social Care?	YES / NO
Does the child and young person have Special Educational Needs?	YES / NO If yes - details.
Has the child and young person raised previous concerns?	YES / NO If yes - details

Trustees, staff and volunteers full name:	
Date of Birth:	
Address:	
Has this person raised concerns before?	

Informing others

Have parents of the child and young person been informed?	
Details of response	

Trustees, staff and volunteers members should be informed of the allegation ASAP - on advice from LADO

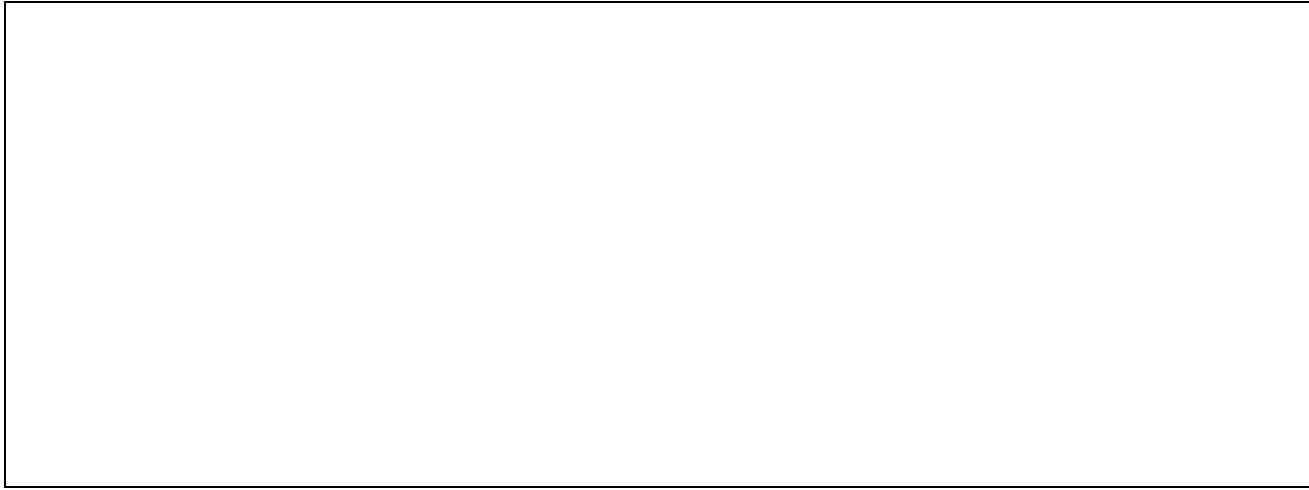
Has the trustees, staff and volunteers member been informed?	YES / NO
Name of Key person nominated to feedback to them:	

Outcome

Does this meet LADO criteria:	YES / NO				
Further action required:					
Professional Strategy Meeting to be held:	YES / NO /NA				
Professional Strategy Meeting date:					
Attended by Case Manager:	YES / NO / NA				
Minutes received:	YES / NO /NA				
Outcome: – <i>please circle</i>	<table style="width: 100%; border: none;"> <tr> <td style="width: 50%; border: none;">Unfounded</td> <td style="width: 50%; border: none;">Unsubstantiated</td> </tr> <tr> <td style="border: none;">False</td> <td style="border: none;">Substantiated</td> </tr> </table>	Unfounded	Unsubstantiated	False	Substantiated
Unfounded	Unsubstantiated				
False	Substantiated				

<p>Substantiated: there is sufficient evidence to prove the allegation</p> <p>Malicious: there is sufficient evidence to disprove the allegation and there has been a deliberate act to deceive or cause harm to the person subject of the allegation</p> <p>False: there is sufficient evidence to disprove the allegation</p> <p>Unsubstantiated: there is insufficient evidence to either prove or disprove the allegation. The term, therefore, does not imply guilt or innocence</p> <p>Unfounded: to reflect cases where there is no evidence or proper basis which supports the allegation being made</p>	Malicious
The information will be referred to in any future reference	YES/NO
Disciplinary investigation to be held:	YES / NO / NA
Trustees, staff and volunteers member informed of outcome:	YES / NO
Parents informed of outcome (no info about the trustees, staff and volunteers member should be shared):	YES / NO
Chair of governors informed:	YES / NO /NA
Details added to overview table:	YES / NO
Outcome:	
Has a referral to the Disclosure and Barring Service (DBS) if the person has been dismissed or removed due to safeguarding concerns or would have been had they not resigned.	YES/NO/NA

Lessons learned:



Note 1 - Criteria for managing allegations.

An allegation may relate to a person who works with children who has:

- Behaved in a way that has harmed, or may have harmed, a child.
- Possibly committed a criminal offence against or related to a child.
- Behaved towards a child or children in a way that indicates they may pose a risk of harm to children.
- Behaved or may have behaved in a way that indicates they may not be suitable to work with children.

APPENDIX 10

The Role of the Designated Teacher for Children Looked After (CLA) within the school.

The Designated Teacher has a leadership role in promoting the educational achievement of every CLA on the school's roll. The role should make a positive difference by promoting a whole school culture where the personalised learning needs of every CLA matters and their personal, emotional and academic needs are prioritised.

The Designated Teacher has lead responsibility for helping school trustees, staff and volunteers to understand the things which can affect how CLA learn and achieve. Everyone involved in helping CLA achieve should:

- Have high expectations of CLA's involvement in learning and educational progress.
- Be aware of the emotional, psychological, and social effects of loss and separation from birth families, the reasons for that separation and that some children may find it difficult to build relationships of trust with adults because of their experiences.
- Understand the reasons which may be behind a CLA's behaviour, and why they may need more support than other children, but the teacher should not allow this to be an excuse for lowering expectations of what a child is capable of achieving.
- Understand how important it is to see CLA as individuals rather than as a homogeneous group and to not publicly treat them differently from their peers.
- Appreciate the importance of showing sensitivity about who else knows about a child's looked after status.

- Create a shared understanding between teachers, carers, social workers and most importantly, depending on age and understanding, the child him or herself of what everyone needs to do to help them to achieve their potential.
- Have the level of understanding of the role of social workers, virtual school head (or equivalent) in local authorities and how education – and the function of the PEP – fits into the wider care planning duties of the authority which looks after the child.

In promoting the educational achievement of looked after children and young people the Designated Teacher will:

- Contribute to the development and review of whole school policies to ensure that they do not unintentionally put CLA at a disadvantage.
- Make sure, in partnership with other trustees, staff and volunteers, that there are effective and well understood school procedures in place to support a CLA's learning. An account should be taken of the child's needs when joining the school and of the importance of promoting an ethos of high expectations about what he or she can achieve.
- Promote a culture in which CLA believe they can succeed and aspire to further and higher education.
- Promote a culture in which CLA are able to discuss their progress and be involved in setting their own targets, have their views taken seriously and are supported to take responsibility for their own learning.
- Be a source of advice for teachers at school about differentiated teaching strategies appropriate for individual children and young people who are looked after.
- Make sure the school makes full use of Assessment for Learning (AfL) approaches to improve the short- and medium-term progress of CLA and help them and their teachers understand where they are in their learning, where they need to go and how to get there.
- Make sure that CLA are prioritised in any selection of children and young people who would benefit from one-to-one tuition and that they have access to academic focused study support.
- Promote good home-school links through contact with the child's carer about how they can support his or her progress by paying attention to effective communication with carers. In particular, they should make sure that carers understand the potential value of one-to-one tuition and are equipped to engage with it at home.
- Have lead responsibility for the development and implementation of the child's PEP within school in partnership with others as necessary.

APPENDIX 11

Quick Guide to making a referral

PRACTITIONERS QUICK GUIDE TO MAKING A REFERRAL TO THE INTERGRATED FRONT DOOR

You have a concern

You need to consider whether urgent action is needed – i.e. the child is at immediate risk of death or has significant injuries; if this is the case immediate medical treatment and police involvement should be sought and then follow this process. In most cases there will be sufficient time to follow this process; when considering if you have concerns that warrant referral to The Integrated Front Door you should use the tools available on Bolton Safeguarding Children Partnership website- <https://www.boltonsafeguardingchildren.org.uk/worried-child>

Consult with your Designated Safeguarding Lead (DSL)

Make sure you have all relevant information available this should include basic details about the child and young person, what your concerns are and why you have them at this time and a summary of your involvement with the child/family – and whether there is an Early Help Assessment in place. When having this discussion, it may be useful to use Bolton Safeguarding Children tool [Is this significant harm?](#)

You should ensure that you record a summary of the discussion and the outcome of it and provide this to the DSL– the DSL will include a rationale for decision about whether or not to refer to The Integrated Front Door.

If TAS school consultation should be had with TAS Social Worker

Tell the parents/carers/child about the referral

Parents and carers should be contacted. The concerns and actions to be taken should be discussed. Your Designated Safeguarding Lead will consider whether in telling parents/carers/child, the child or any other children are placed at further risk which can't be managed. If in any doubt, make the referral and seek the advice of The Integrated Front Door. You should record this discussion and decision making in your records.

You can override consent as you are taking action to safeguard a child

Refer to the The Integrated Front Door

If at immediate risk telephone 01204 331500 option 2. Clearly state you are making a referral, this will avoid confusion Record who you are talking to, provide a clear account of your concerns and why you are contacting The Integrated Front Door now. Follow up with the [Referral Form](#) within 1 working day.

If not at immediate risk_ complete the online [Referral Form](#)

You will receive a response to a referral within 24hrs. If you do not receive a response, you must contact the Integrated Front Door again. Record all action taken.

At the end of the call you should know what is going to happen next, the timescales for action and what your role in this will be.

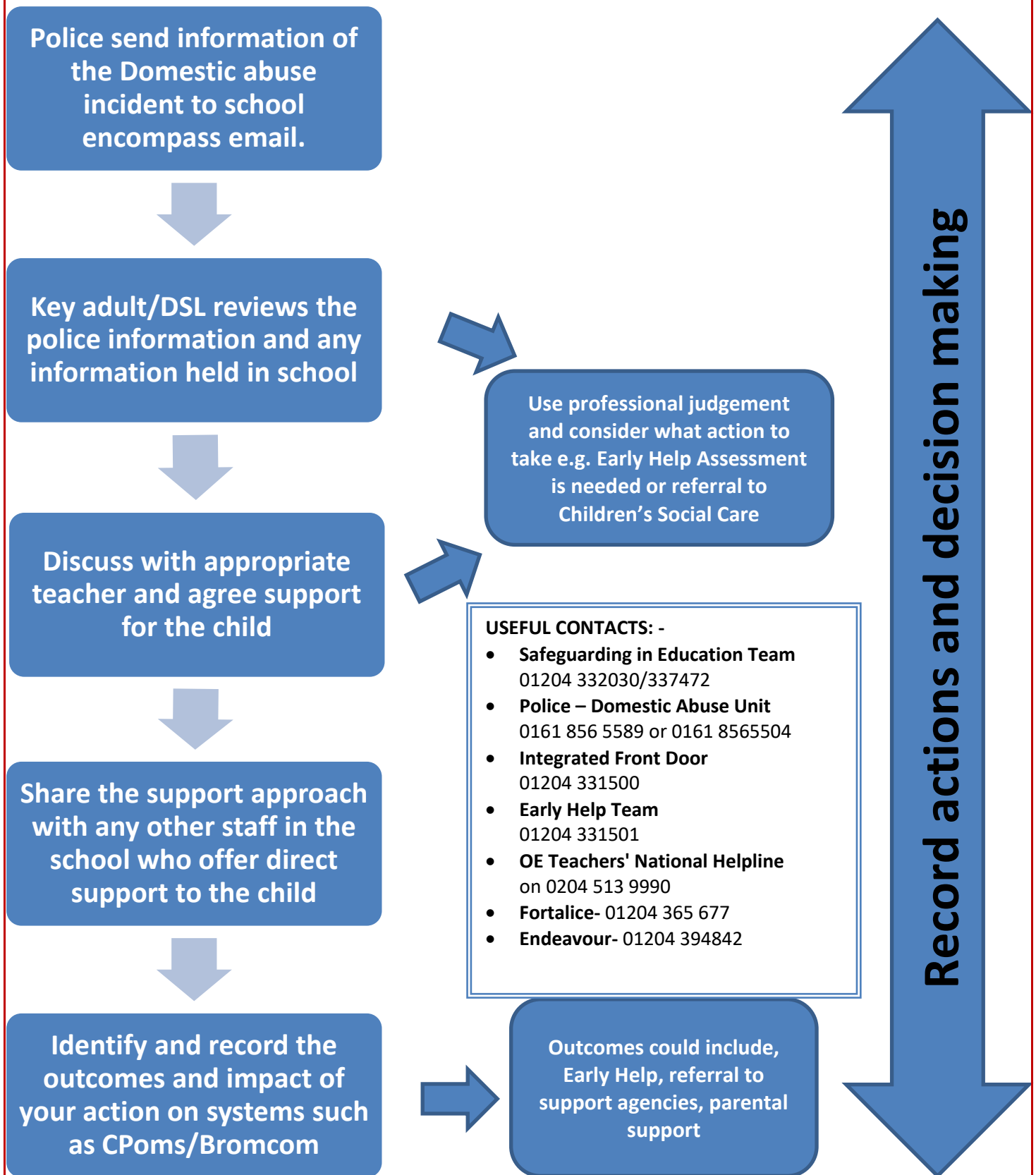
When making a referral refer to [Useful information when making a Child Protection referral](#)

If the Integrated Front Door does not agree that social work involvement is needed you should listen to their reasoning for this and their advice about alternative action – including recommendations to use early help processes; if at the end of this you still do not agree then you should refer to [Bolton's Challenge and Escalation Process](#).

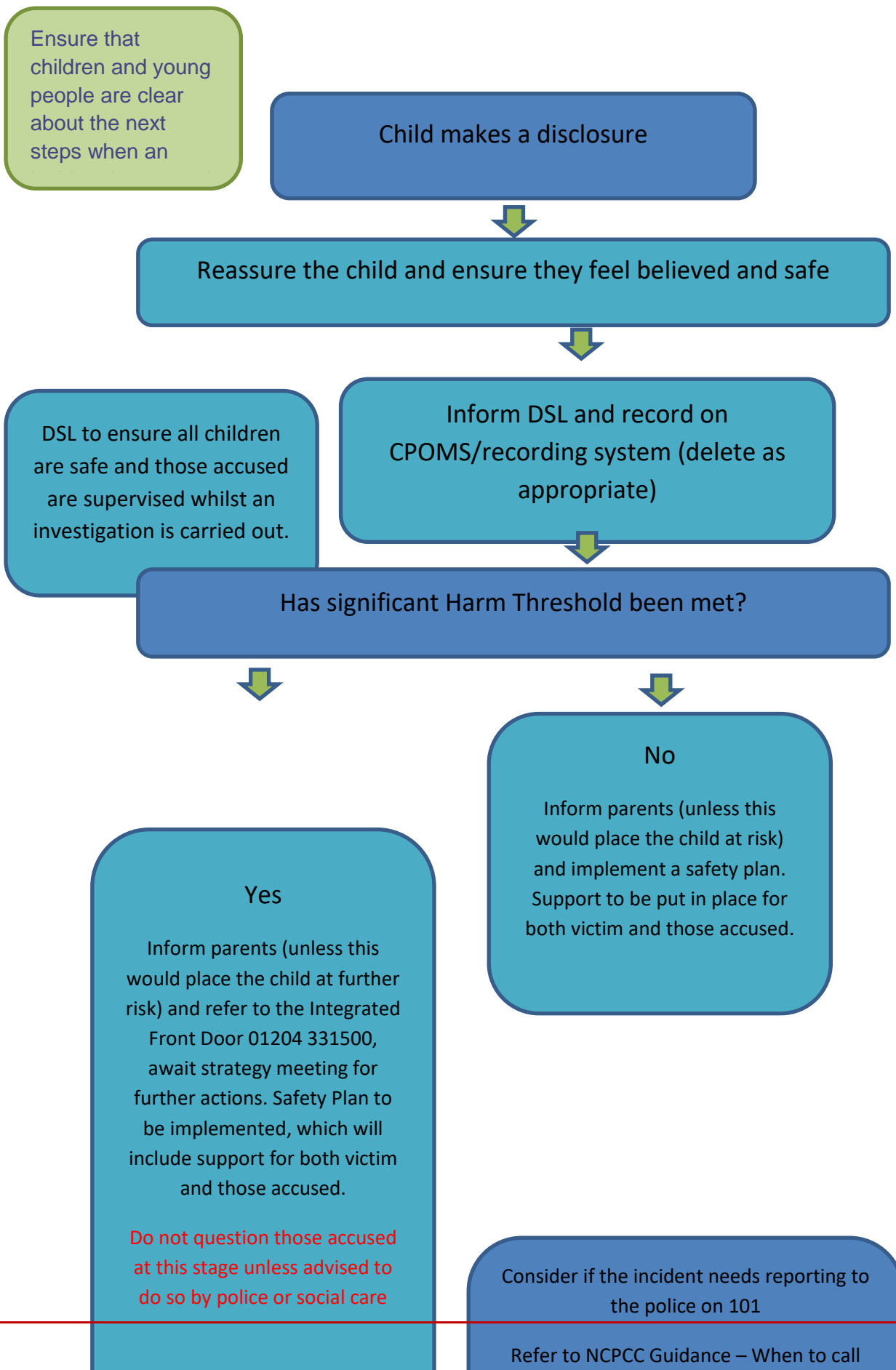
You should ensure that the child and their family continue to be supported and kept safe while awaiting resolution.

If you know there is an Early Help Assessment and Plan open but you are not the Lead Professional, you should tell the Lead Professional about the action you have taken and why as soon as possible; if you are not sure if there is an Early Help Assessment you can check with the Early Help Access Point who will let you know and share details of the Lead Professional where one is identified – it would be good practice to share this information with the Lead Professional. If you are the current Lead Professional making the referral and there is an Early Help Assessment and Plan in place, this should be updated to include the referral information - this helps to avoid duplication and gives the social worker the best possible information from which to start their assessment. Remember to also send a secure copy to the Early Help team at BoltonISA@bolton.gov.uk

Appendix 12 Encompass flow chart



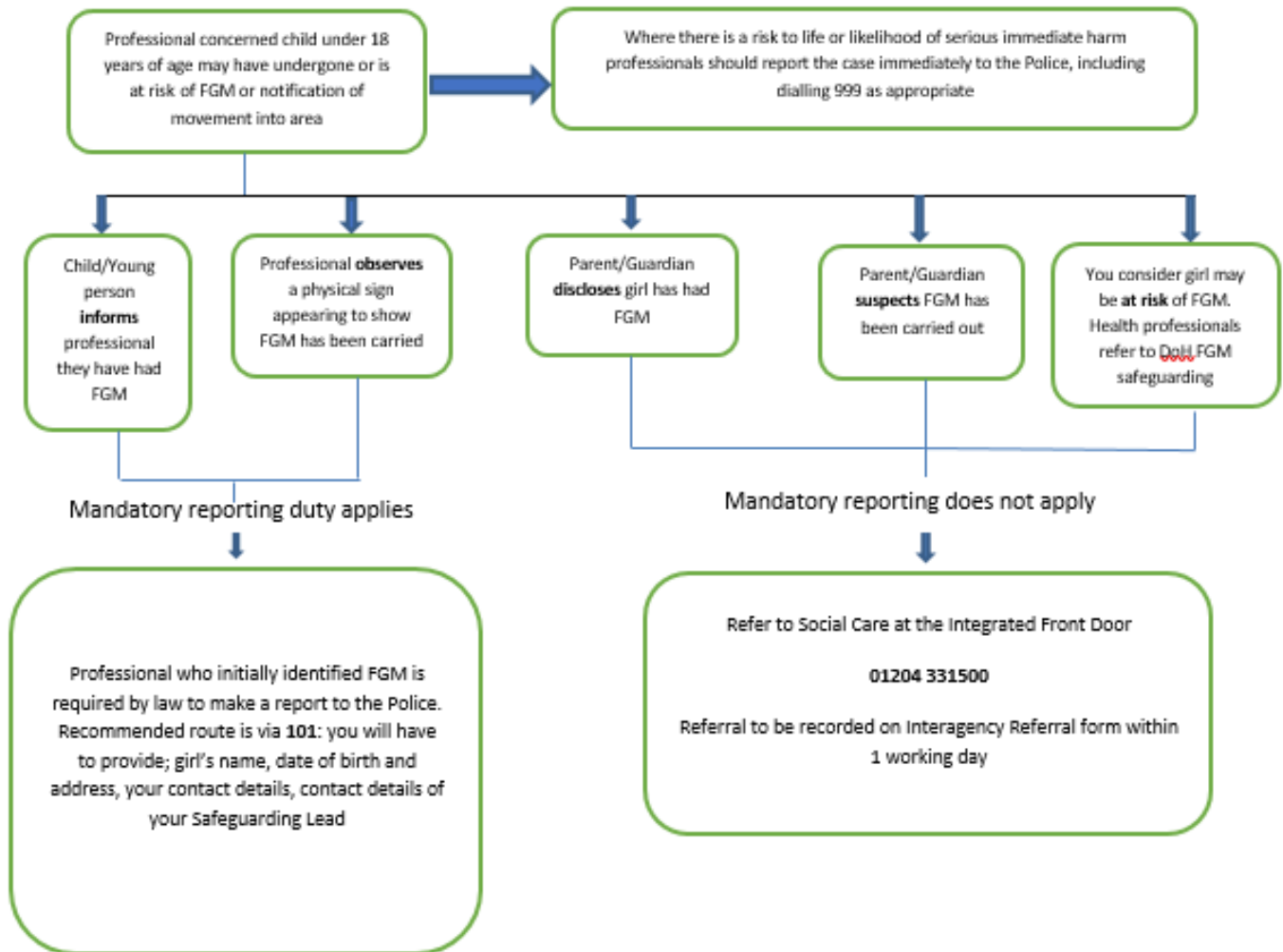
Appendix 13 Child on child Abuse, Sexual Violence and Harassment Flowchart





Appendix 14 FGM Flow Chart

REPORTING FEMALE GENITAL MUTILATION



NB: Staff must not examine the girl and must not inform parents of the concerns without seeking advice from Social Care or the police

Appendix 15

Statement of Trustees, staff and volunteers Commitment to the BYB@Blackrod Safeguarding & Child Protection Policy

To be completed annually BY ALL TRUSTEES, STAFF AND VOLUNTEERS and kept in Personnel Files

Trustees, staff and volunteers Member.....

Position.....

I have read and understood the standards and guidelines outlined in the Safeguarding & Child Protection Policy.

I agree with the principles contained therein and accept the importance of implementing the policies and practices whilst working BYB@Blackrod.

I confirm that I have:

- Received a copy of Safeguarding & Child Protection Policy
- Had the opportunity to read and discuss the policy and procedure
- Discussed and recorded training requirements for ongoing action.

Signed (Trustees, staff and volunteers).....

Signed (Safeguarding Lead)

Date